

# 刀片组合图

Blade combination figure

注：以上刀片库存丰富，交货迅速。  
Note: the above blade rich inventory, prompt delivery.



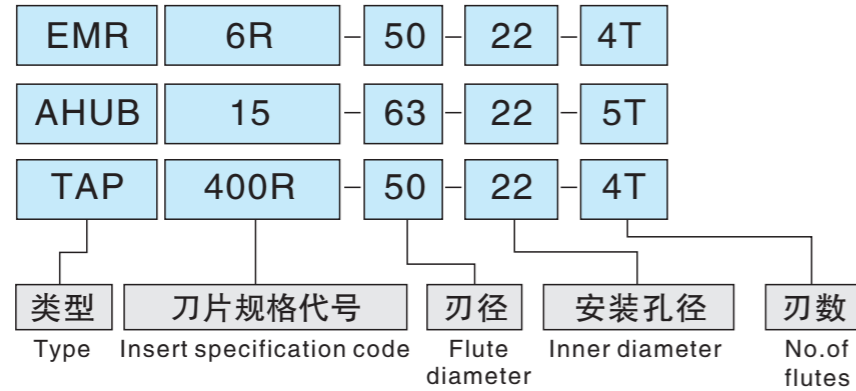
## 特价刀片 Special blade

	APMT1135A	18元/片		APMT1135B	13.5元/片		APMT1135C	6.5元/片
	APMT1135D	2.5元/片		APMT1604A	23元/片		APMT1604B	19元/片
	APMT1604C	10元/片		APMT1604D	5元/片		RDMT10T3	18元/片
	RDMW1003	13元/片		RDMW1204	20-22元/片		RPMT1204	17元/片
	RDMW-1003	16元/片		重切削1135	18元/片		重切削1604	23元/片
	重切削R6	18元/片		重切削RDMW-1003	15元/片			

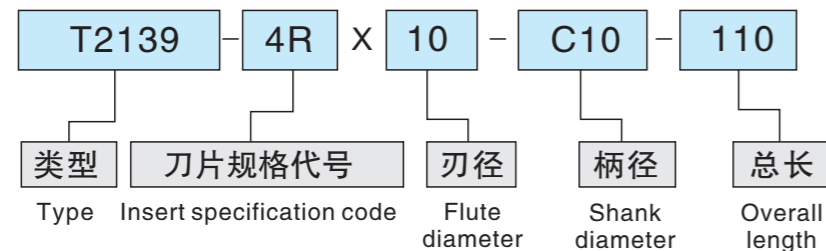
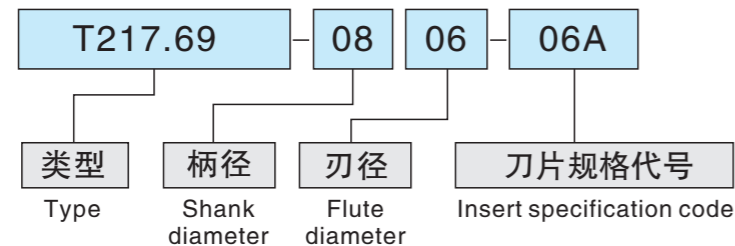
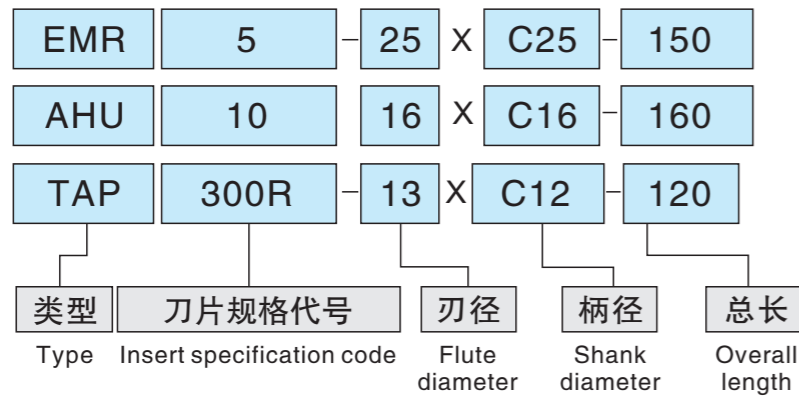


## 铣刀型号识别方法 Mill code Identify method

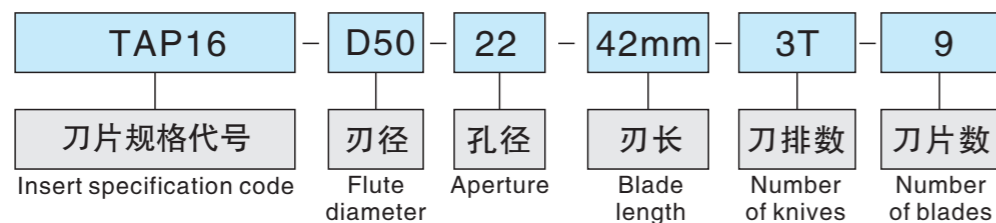
### 壳形铣刀盘 Face mill



### 立铣刀杆 End mill



### 玉米刀盘 Corn cutter



## TAP 方肩铣刀TAP系列AP1135 TAP TAP series AP1135 shoulder milling cutters



- ★采用抗震特种工具钢材料。  
Special tool steel material.
- ★柄部细化处理、预防掉刀  
Handle thinning treatment, prevent the knife
- ★高精度、高品质。  
High precision and high quality.

### 常规类

型号 Cat.No	单价 (元)	适用刀片 Applicable inserts
TAP 300R10-C10-100-1T	54	APMT 1135 PDER
TAP 300R10-C10-130-1T	54	
TAP 300R10-C10-150-1T	60	
TAP 300R12-C12-100-1T	54	
TAP 300R12-C12-130-1T	54	
TAP 300R12-C12-150-1T	60	
TAP 300R12-C12-200-1T	100	
TAP 300R13-C12-100-1T	50	
TAP 300R13-C12-130-1T	50	
TAP 300R13-C12-150-1T	55	
TAP 300R16-C15-150-2T	50	APMT 1135 PDER
TAP 300R16-C15-200-2T	55	
TAP 300R16-C15-250-2T	85	
TAP300R16-C15-300-2T	130	
TAP 300R16-C15.6-150-2T	50	
TAP 300R16-C15.6-200-2T	55	
TAP 300R16-C15.6-250-2T	85	
TAP 300R16-C16-120-2T	50	
TAP 300R16-C16-150-2T	50	
TAP 300R16-C16-200-2T	55	
TAP 300R16-C16-250-2T	85	
TAP 300R16-C16-300-2T	130	
TAP 300R17-C16-150-2T	55	
TAP 300R17-C16-200-2T	60	
TAP300R17-C16-250-2T	85	
TAP300R17-C16-300-2T	130	
TAP 300R20-C20-150-2T	55	APMT 1135 PDER
TAP 300R20-C20-200-2T	60	
TAP 300R20-C20-250-2T	85	
TAP 300R20-C20-300-2T	130	
TAP 300R21-C20-150-2T	55	
TAP 300R21-C20-200-2T	60	
TAP 300R21-C20-250-2T	85	
TAP 300R21-C20-300-2T	130	
TAP 300R25-C24-150-3T	85	
TAP 300R25-C24-200-3T	90	
TAP 300R25-C24-250-3T	110	
TAP 300R25-C24-300-3T	155	
TAP 300R25-C25-150-3T	85	
TAP 300R25-C25-200-3T	90	
TAP 300R25-C25-250-3T	110	
TAP 300R25-C25-300-3T	155	

### 非标类

型号 Cat.No	单价 (元)	适用刀片 Applicable inserts
TAP 300R11-C10-100-1T	90	APMT 1135 PDER
TAP 300R11-C10-130-1T	90	
TAP 300R11-C10-150-1T	90	
TAP 300R14-C14-150-1T	90	
TAP 300R14-C14-200-1T	95	
TAP 300R15-C15-150-2T	100	
TAP 300R15-C15-200-2T	110	
TAP 300R18-C16-150-2T	100	
TAP 300R18-C16-200-2T	110	
TAP 300R18-C16-250-2T	130	
TAP 300R19-C19-150-2T	100	APMT 1135 PDER
TAP 300R19-C19-200-2T	110	
TAP 300R19-C19-250-2T	130	
TAP 300R22-C20-150-2T	100	
TAP 300R22-C20-200-2T	110	
TAP 300R22-C20-250-2T	130	
TAP 300R26-C25-150-3T	120	
TAP 300R26-C25-200-3T	130	
TAP 300R26-C25-250-3T	150	
TAP 300R26-C25-300-3T	210	
TAP 300R27-C25-150-3T	120	
TAP 300R27-C25-200-3T	130	
TAP 300R27-C25-250-3T	160	
TAP 300R28-C25-150-3T	120	
TAP 300R28-C25-200-3T	130	
TAP 300R28-C25-250-3T	160	
TAP 300R29-C25-150-3T	120	
TAP 300R29-C25-200-3T	130	
TAP 300R29-C25-250-3T	160	
TAP 300R30-C25-150-3T	130	
TAP 300R30-C25-200-3T	140	
TAP 300R30-C25-250-3T	170	
TAP 300R32-C32-150-4T	160	APMT 1135 PDER
TAP 300R32-C32-200-4T	170	
TAP 300R32-C32-250-4T	200	
TAP 300R40-C32-150-4T	180	
TAP 300R40-C32-200-4T	200	
TAP 300R50-C32-150-5T	300	
TAP 300R50-C32-200-5T	340	
3#莫氏 TAP 300R20-2T	140	

注：库存型号繁多，页面有限，请咨询我公司。  
Note: the inventory model is various, the page is limited, please consult our company.



## TAP 方肩铣刀TAP系列AP1604 TAP TAP series AP1604 shoulder milling cutters



- ★采用抗震特种工具钢材料。  
Special tool steel material.
- ★柄部细化处理、预防掉刀  
Handle thinning treatment, prevent the knife
- ★高精度、高品质。  
High precision and high quality.

### 常规类

型号 Cat.No	单价 (元)	适用刀片 Applicable inserts
TAP 400R25-C20-150-2T	66	APMT 1604 PDER
TAP 400R25-C20-200-2T	70	
TAP 400R25-C24-150-2T	66	
TAP 400R25-C24-200-2T	70	
TAP 400R25-C24-250-2T	100	
TAP 400R25-C24-300-2T	160	
TAP 400R25-C25-150-2T	66	
TAP 400R25-C25-200-2T	70	
TAP 400R25-C25-250-2T	100	
TAP 400R25-C25-300-2T	160	
TAP 400R26-C25-150-2T	72	
TAP 400R26-C25-200-2T	76	
TAP 400R26-C25-250-2T	120	
TAP 400R26-C25-300-2T	170	
TAP 400R30-C25-150-2T	74	
TAP 400R30-C25-200-2T	80	
TAP 400R30-C25-250-2T	110	
TAP 400R30-C25-300-2T	170	
TAP 400R32-C25-150-2T	84	
TAP 400R32-C25-200-2T	96	
TAP 400R32-C25-250-2T	130	
TAP 400R32-C25-300-2T	170	
TAP 400R32-C32-150-2T	90	
TAP 400R32-C32-200-2T	100	
TAP 400R32-C32-250-3T	140	
TAP 400R32-C32-300-3T	170	
TAP 400R32-C32-300-3T	240	
TAP 400R35-C32-150-3T	100	
TAP 400R35-C32-200-3T	110	
TAP 400R35-C32-250-3T	150	
TAP 400R35-C32-300-3T	180	
TAP 400R35-C32-350-3T	270	
TAP 400R35-C32-400-3T	330	
TAP 400R35-C32-450-3T	440	
TAP 400R35-C32-500-3T	520	
TAP 400R35-C32-550-3T	640	
TAP 400R40-C32-150-3T	140	
TAP 400R40-C32-200-3T	160	
TAP 400R40-C32-250-3T	180	
TAP 400R40-C32-300-3T	220	
TAP 400R40-C32-350-3T	290	
TAP 400R40-C32-400-3T	360	
TAP 400R40-C32-450-3T	480	

### 非标类

型号 Cat.No	单价 (元)	适用刀片 Applicable inserts
TAP 400R22-C20-150-2T	100	APMT 1604 PDER
TAP 400R22-C20-200-2T	100	
TAP 400R22-C20-250-2T	150	
TAP 400R23-C20-150-2T	100	
TAP 400R23-C20-200-2T	100	
TAP 400R23-C20-250-2T	150	
TAP 400R24-C24-150-2T	120	
TAP 400R24-C24-200-2T	120	
TAP 400R24-C24-250-2T	150	
TAP 400R27-C25-150-2T	120	
TAP 400R27-C25-200-2T	130	
TAP 400R27-C25-250-2T	150	
TAP 400R28-C25-150-2T	120	
TAP 400R28-C25-200-2T	130	
TAP 400R28-C25-250-2T	150	
TAP 400R33-C32-150-3T	160	
TAP 400R33-C32-200-3T	180	
TAP 400R33-C32-250-3T	240	
TAP 400R33-C32-300-3T	300	
TAP 400R34-C32-150-3T	130	
TAP 400R34-C32-200-3T	140	
TAP 400R34-C32-250-3T	240	
TAP 400R34-C32-300-3T	300	
TAP 400R36-C32-150-3T	130	
TAP 400R36-C32-200-3T	140	
TAP 400R50-C32-150-4T	220	
TAP 400R50-C32-200-4T	280	
TAP 400R63-C32-150-4T	240	
TAP 400R63-C32-200-4T	300	
3#莫氏 TAP 400R25-2T	140	APMT 1604 PDER
3#莫氏 TAP 400R28-2T	150	
4#莫氏 TAP 300R20-2T	140	
4#莫氏 TAP 400R25-2T	140	
4#莫氏 TAP 400R28-2T	150	
4#莫氏 TAP 400R30-3T	150	
4#莫氏 TAP 400R32-3T	150	
4#莫氏 TAP 400R36-3T	150	
4#莫氏 TAP 400R40-3T	150	
4#莫氏 TAP 400R45-4T	160	
4#莫氏 TAP 400R50-4T	170	
4#莫氏 TAP 400R63-4T	240	
4#莫氏 TAP 400R80-5T	320	

注：库存型号繁多，页面有限，请咨询我公司。  
Note: the inventory model is various, the page is limited, please consult our company.

## R390铣刀杆系列 R390 milling cutter series



- ★采用抗震特种工具钢材料。  
Special tool steel material.
- ★柄部细化处理、预防掉刀  
Handle thinning treatment, prevent the knife
- ★高精度、高品质。  
High precision and high quality.

型号 Cat.No	单价 (元)	适用刀片 Applicable inserts
R390-10-C10-100-1T	54	R390-170408
R390-10-C10-130-1T	54	
R390-10-C10-150-1T	60	
R390-12-C12-100-1T	54	
R390-12-C12-130-1T	54	
R390-12-C12-150-1T	60	
R390-12-C12-200-1T	100	
R390-13-C12-100-1T	50	
R390-13-C12-130-1T	50	
R390-13-C12-150-1T	55	
R390-16-C15-150-2T	50	
R390-16-C15-200-2T	55	
R390-16-C15-250-2T	85	
R390-16-C15.6-150-2T	50	
R390-16-C15.6-200-2T	55	
R390-16-C15.6-250-2T	85	
R390-16-C16-120-2T	50	
R390-16-C16-150-2T	50	
R390-16-C16-200-2T	55	
R390-16-C16-250-2T	85	
R390-16-C16-300-2T	130	
R390-17-C16-150-2T	55	
R390-17-C16-200-2T	60	
R390-20-C20-150-2T	55	
R390-20-C20-200-2T	60	
R390-20-C20-250-2T	85	
R390-20-C20-300-2T	130	
R390-21-C20-150-2T	55	
R390-21-C20-200-2T	60	
R390-21-C20-250-2T	85	
R390-21-C20-300-2T	130	
R390-25-C24-150-3T	85	
R390-25-C24-200-3T	90	
R390-25-C24-250-3T	110	
R390-25-C24-300-3T	155	
R390-25-C25-150-3T	85	
R390-25-C25-200-3T	90	
R390-25-C25-250-3T	110	
R390-25-C25-300-3T	155	

型号 Cat.No	适用刀片 Applicable inserts	单价 (元)
R390-11-C10-100-1T	R390-170408	90
R390-11-C10-130-1T		90
R390-11-C10-150-1T		90
R390-14-C14-150-1T		90
R390-14-C14-200-1T		95
R390-15-C15-150-2T		100
R390-15-C15-200-2T		110
R390-18-C16-150-2T		100
R390-18-C16-200-2T		110
R390-18-C16-250-2T		130
R390-19-C19-150-2T		100
R390-19-C19-200-2T		110
R390-19-C19-250-2T		130
R390-22-C20-150-2T		100
R390-22-C20-200-2T		110
R390-22-C20-250-2T		130
R390-26-C25-150-3T		120
R390-26-C25-200-3T		130
R390-26-C25-250-3T		150
R390-26-C25-300-3T		210
R390-27-C25-150-3T		120
R390-27-C25-200-3T		130
R390-27-C25-250-3T		160
R390-28-C25-150-3T		120
R390-28-C25-200-3T		130
R390-28-C25-250-3T		160
R390-29-C25-150-3T		120
R390-29-C25-200-3T		130
R390-29-C25-250-3T		160
R390-30-C25-150-3T		130
R390-30-C25-200-3T		140
R390-30-C25-250-3T		170
R390-32-C32-150-4T		160
R390-32-C32-200-4T		170
R390-32-C32-250-4T		200
R390-40-C32-150-4T		180
R390-40-C32-200-4T	200	
R390-50-C32-150-5T	300	
R390-50-C32-200-5T	340	
3#莫氏 R390-20-2T	140	



## APKT 直角台肩铣刀 APKT right angle shoulder end mill



- ★采用抗震特种工具钢材料。  
Special tool steel material.
- ★柄部细化处理、预防掉刀  
Handle thinning treatment, prevent the knife
- ★高精度、高品质。  
High precision and high quality.

型号 Cat.No	单价 (元)	适用刀片 Applicable inserts
APKT 10-C10-120-1T	90	APKT 1135
APKT 11-C10-120-1T	90	
APKT 12-C12-120-1T	90	
APKT 13-C12-120-1T	90	
APKT 16-C15-120-2T	120	
APKT 16-C15-150-2T	120	
APKT 16-C15-200-2T	130	
APKT 16-C16-120-2T	120	
APKT 16-C16-150-2T	120	
APKT 16-C16-200-2T	130	
APKT 17-C16-150-2T	120	
APKT 17-C16-200-2T	130	
APKT 20-C20-150-2T	120	
APKT 20-C20-200-2T	130	
APKT 21-C20-150-2T	120	
APKT 21-C20-200-2T	130	
APKT 22-C20-150-2T	160	
APKT 22-C20-200-2T	170	

型号 Cat.No	单价 (元)	适用刀片 Applicable inserts
APKT 25-C20-150-2T	130	APKT 1604
APKT 25-C20-200-2T	140	
APKT 25-C24-150-2T	130	
APKT 25-C24-200-2T	140	
APKT 25-C25-150-2T	130	
APKT 25-C25-200-2T	140	
APKT 26-C25-150-2T	140	
APKT 26-C25-200-2T	150	
APKT 30-C25-150-2T	140	
APKT 30-C25-200-2T	150	
APKT 32-C25-150-2T	150	
APKT 32-C25-200-2T	160	
APKT 32-C32-150-3T	155	
APKT 32-C32-200-3T	165	
APKT 35-C32-150-3T	160	
APKT 35-C32-200-3T	170	
APKT 40-C32-150-3T	170	
APKT 40-C32-200-3T	180	
APKT 40-C32-150-3T	280	
APKT 40-C32-200-3T	300	

## UEX 直角台肩精铣刀 UEX right angle shoulder end mill



- ★采用抗震特种工具钢材料。  
Special tool steel material.
- ★高精度、高品质。  
High precision and high quality.
- ★柄部细化处理、预防掉刀  
Handle thinning treatment, prevent the knife

型号 Cat.No	单价 (元)	适用刀片 Applicable inserts
UEX16-C16-120-2T	120	APET120204
UEX17-C16-120-2T	120	
UEX16-C16-150-2T	130	
UEX16-C16-200-2T	140	
UEX17-C20-150-2T	130	
UEX17-C20-200-2T	140	
UEX20-C20-120-2T	120	
UEX20-C20-150-2T	130	
UEX20-C20-200-2T	140	
UEX21-C20-150-2T	130	
UEX21-C20-200-2T	140	
UEX25-C25-150-3T	140	
UEX25-C25-200-3T	150	
UEX26-C25-150-3T	140	
UEX26-C25-200-3T	150	
UEX32-C32-150-3T	160	
UEX32-C32-200-3T	170	

## SB直杆型 SB twin-bit rough boring head rbh



型号 Cat.No	单价 (元)	适用刀片 Applicable inserts
SB C16-TB15-110	136	CCMT060204
SB C16-TB16-110	136	
SB C16-TB17-110	136	
SB C16-TB18-110	136	
SB C16-TB19-110	140	
SB C16-TB20-110	140	
SB C20-TB21-120	146	
SB C20-TB22-120	146	
SB C20-TB23-120	146	
SB C20-TB24-120	150	
SB C20-TB25-120	150	
SB C20-TB26-120	150	
SB C20-TB27-120	150	
SB C20-TB28-120	150	
SB C25-TB25-160	170	CCMT09T308
SB C25-TB30-190	180	
SB C25-TB32-160	190	
SB C25-TB35-160	190	
SB C25-TB37-160	205	
SB C25-TB40-190	210	
SB C32-TB35-230	220	
SB C32-TB40-250	265	
SB C32-TB42-200	320	
SB C32-TB45-200	300	
SB C32-TB47-200	320	
SB C32-TB50-200	340	

## AHU 直角台肩铣刀 AHU right angle shoulder end mill



- ★采用抗震特种工具钢材料。  
Special tool steel material.
- ★高精度、高品质。  
High precision and high quality.
- ★柄部细化处理、预防掉刀  
Handle thinning treatment, prevent the knife

型号 Cat.No	单价 (元)	适用刀片 Applicable inserts
AHU16-C16-120-2T	120	JDMT 1003
AHU17-C16-120-2T	120	
AHU16-C16-150-2T	130	
AHU16-C16-200-2T	140	
AHU17-C20-150-2T	130	
AHU17-C20-200-2T	140	
AHU20-C20-120-2T	120	
AHU20-C20-150-2T	130	
AHU20-C20-200-2T	140	
AHU21-C20-150-2T	130	
AHU21-C20-200-2T	140	
AHU25-C25-150-2T	140	JDMT 1505
AHU25-C25-200-2T	150	
AHU26-C25-150-2T	140	
AHU26-C25-200-2T	150	
AHU32-C32-150-3T	160	
AHU32-C32-200-3T	170	
AHU33-C32-150-3T	160	
AHU33-C32-200-3T	170	
AHU35-C32-150-3T	170	
AHU35-C32-200-3T	180	
AHU40-C32-150-3T	190	
AHU40-C32-200-3T	200	

## ASR 快进给立铣刀 ASR high feedrate end mill



- ★采用抗震特种工具钢材料。  
Special tool steel material.
- ★高精度、高品质。  
High precision and high quality.
- ★柄部细化处理、预防掉刀  
Handle thinning treatment, prevent the knife

型号 Cat.No	单价 (元)	适用刀片 Applicable inserts
ASR16-C16-120-2T	120	EPNW0603TN-8 EPMT0603TN-8
ASR17-C16-120-2T	120	
ASR16-C16-150-2T	130	
ASR16-C16-200-2T	140	
ASR17-C20-150-2T	130	
ASR17-C20-200-2T	140	
ASR20-C20-120-2T	120	
ASR20-C20-150-2T	130	
ASR20-C20-200-2T	140	
ASR21-C20-150-2T	130	
ASR21-C20-200-2T	140	
ASR25-C25-150-3T	140	
ASR25-C25-200-3T	150	
ASR26-C25-150-3T	140	
ASR26-C25-200-3T	150	
ASR32-C32-150-4T	160	
ASR32-C32-200-4T	170	
ASR33-C32-150-4T	160	
ASR33-C32-200-4T	170	
ASR35-C32-150-4T	170	
ASR35-C32-200-4T	180	
ASR40-C32-150-4T	190	
ASR40-C32-200-4T	200	

## TCP 强力立铣刀 TCP indexable end mill



- ★采用抗震特种工具钢材料。  
Special tool steel material.
- ★高精度、高品质。  
High precision and high quality.
- ★柄部细化处理、预防掉刀  
Handle thinning treatment, prevent the knife

型号 Cat.No	单价 (元)	适用刀片 Applicable inserts
TCP16-C16-120-2T	76	CCMT060204
TCP16-C16-150-2T	80	
TCP16-C16-200-2T	90	
TCP20-C20-120-2T	76	
TCP20-C20-150-2T	80	
TCP20-C20-200-2T	90	

型号 Cat.No	单价 (元)	适用刀片 Applicable inserts
TCP25-C25-150-2T	90	CCMT090308
TCP25-C25-200-2T	100	
TCP25-C25-250-2T	150	
TCP30-C25-150-2T	110	CCMT120408
TCP30-C25-200-2T	120	
TCP30-C25-250-2T	170	
TCP32-C32-150-2T	140	
TCP32-C32-200-2T	150	
TCP32-C32-250-2T	200	
TCP33-C32-150-2T	150	
TCP33-C32-200-2T	160	
TCP33-C32-250-2T	220	
TCP35-C32-150-3T	180	
TCP35-C32-200-3T	200	
TCP35-C32-250-3T	300	
TCP35-C32-300-3T	400	



### TJU 过中心钻铣刀 TJU borer mill



- ★ 采用抗震特种工具钢材料。 Special tool steel material. ★ 高精度、高品质。 High precision and high quality.
- ★ 柄部细化处理、预防掉刀。 Handle thinning treatment, prevent the knife

型号 Cat.No	单价 (元)	适用刀片 Applicable inserts
TJU 10-C10-120-1T	54	
TJU 12-C12-120-1T	54	CCMT060204
TJU 13-C12-120-1T	54	CPMT080204Z
TJU 16-C16-120-2T	76	
TJU 16-C16-150-2T	80	
TJU 16-C16-200-2T	90	
TJU 17-C16-120-2T	76	
TJU 17-C16-150-2T	80	CCMT060204
TJU 17-C16-200-2T	90	CPMT080204Z
TJU 19-C19-150-2T	160	
TJU 19-C19-200-2T	170	
TJU 20-C20-120-2T	76	
TJU 20-C20-150-2T	80	
TJU 20-C20-200-2T	90	
TJU 21-C20-120-2T	76	CCMT060204
TJU 21-C20-150-2T	80	CPMT090204Z
TJU 21-C20-200-2T	90	
TJU 25-C25-150-2T	100	
TJU 25-C25-200-2T	110	
TJU 25-C25-250-2T	160	CPMT090308
TJU 25-C25-300-2T	220	CPMT120308Z
TJU 25-C25-350-2T	270	

### TJU 过中心钻铣刀 TJU borer mill



- ★ 采用抗震特种工具钢材料。 Special tool steel material. ★ 高精度、高品质。 High precision and high quality.
- ★ 柄部细化处理、预防掉刀。 Handle thinning treatment, prevent the knife

型号 Cat.No	单价 (元)	适用刀片 Applicable inserts
TJU 26-C25-150-2T	110	
TJU 26-C25-200-2T	120	CPMT090308
TJU 26-C25-250-2T	170	CPMT120308Z
TJU 26-C25-300-2T	240	
TJU 32-C32-150-2T	140	
TJU 32-C32-200-2T	150	
TJU 32-C32-250-2T	190	
TJU 32-C32-300-2T	250	
TJU 33-C32-150-2T	160	
TJU 33-C32-200-2T	170	CPMT120408
TJU 33-C32-250-2T	200	CPMT160408Z
TJU 33-C32-300-2T	270	
TJU 33-C32-350-2T	320	
TJU 35-C32-150-2T	180	
TJU 35-C32-200-2T	190	
TJU 35-C32-250-2T	220	
TJU 35-C32-300-2T	300	
TJU 40-C32-250-2T	240	
TJU 40-C32-300-2T	330	CPMT160408
TJU 40-C32-350-2T	400	CPMT190408Z
TJU 40-C32-400-2T	460	
TJU 40-C32-450-2T	560	

### ASJ-2P 钻铣刀 ASJ-2P borer mill

备注: 4P可订做



- ★ 采用抗震特种工具钢材料。 Special tool steel material. ★ 高精度、高品质。 High precision and high quality.
- ★ 柄部细化处理、预防掉刀。 Handle thinning treatment, prevent the knife

型号 Cat.No	单价 (元)	适用刀片 Applicable inserts
ASJ-16-C16-120-2T	170	
ASJ-16-C16-150-2T	180	
ASJ-16-C16-200-2T	190	ADMT080308L
ASJ-17-C16-120-2T	170	APMT090208R
ASJ-17-C16-150-2T	180	
ASJ-17-C16-200-2T	190	
ASJ-20-C20-120-2T	170	ADMT1003□□L
ASJ-20-C20-150-2T	180	ACMT1003□□R
ASJ-20-C20-200-2T	190	

型号 Cat.No	单价 (元)	适用刀片 Applicable inserts
ASJ-21-C20-120-2T	170	ADMT1003□□L
ASJ-21-C20-150-2T	180	ACMT1003□□R
ASJ-21-C20-200-2T	190	
ASJ-25-C25-150-2T	190	
ASJ-25-C25-200-2T	200	
ASJ-25-C25-250-2T	260	ADMT12T3□□L
ASJ-26-C25-150-2T	190	ACMT12T3□□R
ASJ-26-C25-200-2T	200	
ASJ-26-C25-250-2T	260	
ASJ-26-C25-300-2T	300	
ASJ-32-C32-150-2T	200	
ASJ-32-C32-200-2T	210	
ASJ-32-C32-250-2T	280	
ASJ-32-C32-300-2T	380	
ASJ-33-C32-150-2T	200	ADMT1604□□L
ASJ-33-C32-200-2T	210	ACMT1504□□R
ASJ-33-C32-250-2T	280	
ASJ-33-C32-300-2T	380	
ASJ-35-C32-150-2T	220	
ASJ-35-C32-200-2T	230	
ASJ-35-C32-250-2T	300	
ASJ-35-C32-300-2T	400	

### R4 EMR 通用型圆鼻立铣刀 EMR Universal round nose end mill

刀片型号08通用型



- ★ 采用抗震特种工具钢材料。 Special tool steel material. ★ 高精度、高品质。 High precision and high quality.
- ★ 柄部细化处理、预防掉刀。 Handle thinning treatment, prevent the knife

型号 Cat.No	单价 (元)	适用刀片 Applicable inserts
EMR 4R10-C10-100-1T	54	
EMR 4R10-C10-130-1T	54	
EMR 4R10-C10-150-1T	60	
EMR 4R11-C10-100-1T	90	
EMR 4R11-C10-130-1T	90	
EMR 4R11-C10-150-1T	90	
EMR 4R12-C12-100-1T	54	
EMR 4R12-C12-130-1T	54	
EMR 4R12-C12-150-1T	60	
EMR 4R13-C12-100-1T	54	
EMR 4R13-C12-130-1T	54	
EMR 4R13-C12-150-1T	60	
EMR 4R16-C15-150-2T	60	
EMR 4R16-C15-200-2T	64	
EMR 4R16-C15-250-2T	100	RPMW 0802
EMR 4R16-C15-300-2T	160	MO
EMR 4R16-C15.6-150-2T	60	
EMR 4R16-C15.6-200-2T	64	
EMR 4R16-C15.6-250-2T	100	
EMR 4R16-C15.6-300-2T	160	RPMT 08T2
EMR 4R16-C16-120-2T	56	
EMR 4R16-C16-150-2T	60	
EMR 4R16-C16-200-2T	64	RDMT 08T2
EMR 4R16-C16-250-2T	100	
EMR 4R17-C16-120-2T	58	
EMR 4R17-C16-150-2T	60	
EMR 4R17-C16-200-2T	64	
EMR 4R17-C16-250-2T	100	
EMR 4R17-C16-300-2T	160	
EMR 4R20-C19-150-2T	60	
EMR 4R20-C19-200-2T	64	
EMR 4R20-C19-250-2T	100	
EMR 4R20-C19-300-2T	160	
EMR 4R20-C20-120-2T	58	
EMR 4R20-C20-150-2T	60	
EMR 4R20-C20-200-2T	64	
EMR 4R20-C20-250-2T	100	
EMR 4R20-C20-300-2T	160	
EMR 4R21-C20-150-2T	60	
EMR 4R21-C20-200-2T	64	
EMR 4R21-C20-250-2T	100	
EMR 4R21-C20-300-2T	160	

### R5 EMR 圆鼻立铣刀 EMR round dowel end mill



- ★ 采用抗震特种工具钢材料。 Special tool steel material. ★ 高精度、高品质。 High precision and high quality.
- ★ 柄部细化处理、预防掉刀。 Handle thinning treatment, prevent the knife

型号 Cat.No	单价 (元)	适用刀片 Applicable inserts
EMR 5R20-C19-150-2T	70	
EMR 5R20-C19-200-2T	76	
EMR 5R20-C20-150-2T	70	
EMR 5R20-C20-200-2T	76	
EMR 5R20-C20-250-2T	100	RPMW 1003
EMR 5R21-C20-150-2T	70	MO
EMR 5R21-C20-200-2T	76	
EMR 5R25-C20-150-2T	70	
EMR 5R25-C20-200-2T	76	
EMR 5R25-C24-150-2T	70	
EMR 5R25-C24-200-2T	76	
EMR 5R25-C24-250-2T	110	
EMR 5R25-C24-300-2T	170	
EMR 5R25-C24-350-2T	240	
EMR 5R25-C25-150-2T	70	
EMR 5R25-C25-200-2T	76	
EMR 5R25-C25-250-2T	110	
EMR 5R25-C25-300-2T	170	
EMR 5R25-C25-350-2T	240	
EMR 5R26-C25-150-2T	72	
EMR 5R26-C25-200-2T	76	
EMR 5R30-C20-110-2T	50	
EMR 5R30-C25-150-2T	74	RPMW 1003
EMR 5R30-C25-200-2T	80	MO
EMR 5R30-C25-250-2T	120	
EMR 5R30-C25-300-2T	190	
EMR 5R30-C25-350-2T	260	
EMR 5R32-C32-150-3T	96	
EMR 5R32-C32-200-3T	108	
EMR 5R32-C32-250-3T	140	
EMR 5R33-C32-150-3T	96	
EMR 5R33-C32-200-3T	108	
EMR 5R35-C32-150-3T	110	
EMR 5R35-C32-200-3T	120	
EMR 5R35-C32-250-3T	150	
EMR 5R35-C32-300-3T	190	
EMR 5R35-C32-350-3T	270	
EMR 5R35-C32-400-3T	320	
EMR 5R35-C32-450-3T	440	
EMR 5R35-C32-500-3T	560	
EMR 5R40-C32-150-4T	150	
EMR 5R40-C32-200-4T	160	
EMR 5R40-C32-250-4T	160	
EMR 5R40-C32-300-4T	290	
EMR 5R40-C32-350-4T	300	



## R5 TRS 圆鼻立铣刀 TRS round dowel end mill



- ★ 采用抗震特种工具钢材料。  
Special tool steel material.
- ★ 高精度、高品质。  
High precision and high quality.
- ★ 柄部细化处理、预防掉刀  
Handle thinning treatment, prevent the knife

型号 Cat.No	单价 (元)	适用刀片 Applicable inserts
TRS 5R20-C19-150-2T	70	RDMT 10T3
TRS 5R20-C19-200-2T	76	
TRS 5R20-C20-150-2T	70	
TRS 5R20-C20-200-2T	76	
TRS 5R20-C20-250-2T	100	
TRS 5R21-C20-150-2T	70	
TRS 5R21-C20-200-2T	76	RDMT 10T3
TRS 5R25-C20-150-2T	70	
TRS 5R25-C20-200-2T	76	
TRS 5R25-C24-150-2T	70	
TRS 5R25-C24-200-2T	76	
TRS 5R25-C24-250-2T	110	
TRS 5R25-C24-300-2T	170	
TRS 5R25-C24-350-2T	240	
TRS 5R25-C25-150-2T	70	
TRS 5R25-C25-200-2T	76	
TRS 5R25-C25-250-2T	110	
TRS 5R25-C25-300-2T	170	
TRS 5R25-C25-350-2T	240	
TRS 5R26-C25-150-2T	72	
TRS 5R26-C25-200-2T	76	
TRS 5R30-C20-110-2T	50	
TRS 5R30-C25-150-2T	74	
TRS 5R30-C25-200-2T	80	
TRS 5R30-C25-250-2T	120	
TRS 5R30-C25-300-2T	190	
TRS 5R30-C25-350-2T	260	
TRS 5R32-C32-150-3T	96	
TRS 5R32-C32-200-3T	108	
TRS 5R32-C32-250-3T	140	
TRS 5R33-C32-150-3T	96	
TRS 5R33-C32-200-3T	108	
TRS 5R35-C32-150-3T	110	
TRS 5R35-C32-200-3T	120	
TRS 5R35-C32-250-3T	150	
TRS 5R35-C32-300-3T	190	
TRS 5R35-C32-350-3T	270	
TRS 5R35-C32-400-3T	320	
TRS 5R35-C32-450-3T	440	
TRS 5R35-C32-500-3T	560	
TRS 5R40-C32-150-4T	150	
TRS 5R40-C32-200-4T	160	
TRS 5R40-C32-250-4T	160	
TRS 5R40-C32-300-4T	290	
TRS 5R40-C32-350-4T	300	

## R5 EMRW 圆鼻立铣刀 EMRW round dowel end mill



- ★ 采用抗震特种工具钢材料。  
Special tool steel material.
- ★ 高精度、高品质。  
High precision and high quality.
- ★ 柄部细化处理、预防掉刀  
Handle thinning treatment, prevent the knife

型号 Cat.No	单价 (元)	适用刀片 Applicable inserts
EMRW 5R20-C19-150-2T	70	RPMT 10T3
EMRW 5R20-C19-200-2T	76	
EMRW 5R20-C20-150-2T	70	
EMRW 5R20-C20-200-2T	76	
EMRW 5R20-C20-250-2T	100	
EMRW 5R21-C20-150-2T	70	
EMRW 5R21-C20-200-2T	76	RPMT 10T3
EMRW 5R25-C20-150-2T	70	
EMRW 5R25-C20-200-2T	76	
EMRW 5R25-C24-150-2T	70	
EMRW 5R25-C24-200-2T	76	
EMRW 5R25-C24-250-2T	110	
EMRW 5R25-C24-300-2T	170	
EMRW 5R25-C24-350-2T	240	
EMRW 5R25-C25-150-2T	70	
EMRW 5R25-C25-200-2T	76	
EMRW 5R25-C25-250-2T	110	
EMRW 5R25-C25-300-2T	170	
EMRW 5R25-C25-350-2T	240	
EMRW 5R26-C25-150-2T	72	
EMRW 5R26-C25-200-2T	76	
EMRW 5R30-C20-110-2T	50	
EMRW 5R30-C25-150-2T	74	
EMRW 5R30-C25-200-2T	80	
EMRW 5R30-C25-250-2T	120	
EMRW 5R30-C25-300-2T	190	
EMRW 5R30-C25-350-2T	260	
EMRW 5R32-C32-150-3T	96	
EMRW 5R32-C32-200-3T	108	
EMRW 5R32-C32-250-3T	140	
EMRW 5R33-C32-150-3T	96	
EMRW 5R33-C32-200-3T	108	
EMRW 5R35-C32-150-3T	110	
EMRW 5R35-C32-200-3T	120	
EMRW 5R35-C32-250-3T	150	
EMRW 5R35-C32-300-3T	190	
EMRW 5R35-C32-350-3T	270	
EMRW 5R35-C32-400-3T	320	
EMRW 5R35-C32-450-3T	440	
EMRW 5R35-C32-500-3T	560	
EMRW 5R40-C32-150-4T	150	
EMRW 5R40-C32-200-4T	160	
EMRW 5R40-C32-250-4T	160	
EMRW 5R40-C32-300-4T	290	
EMRW 5R40-C32-350-4T	300	

## R6 EMR TRS EMRW 通用型圆鼻立铣刀 EMR Universal round dowel end mill



- ★ 采用抗震特种工具钢材料。  
Special tool steel material.
- ★ 高精度、高品质。  
High precision and high quality.
- ★ 柄部细化处理、预防掉刀  
Handle thinning treatment, prevent the knife

型号 Cat.No	单价 (元)	适用刀片 Applicable inserts
EMR 6R25-C24-150-2T	72	RDKT 1204
EMR 6R25-C24-200-2T	78	
EMR 6R25-C25-150-2T	72	
EMR 6R25-C25-200-2T	78	
EMR 6R26-C25-150-2T	74	
EMR 6R26-C25-200-2T	80	
EMR 6R30-C25-150-2T	80	
EMR 6R30-C25-200-2T	84	
EMR 6R32-C25-150-2T	98	
EMR 6R32-C25-200-2T	110	
EMR 6R32-C25-250-2T	142	RDMW 1204
EMR 6R32-C32-150-3T	100	
EMR 6R32-C32-200-3T	110	
EMR 6R32-C32-250-3T	148	
EMR 6R32-C32-300-3T	180	
EMR 6R33-C32-150-3T	100	
EMR 6R33-C32-200-3T	110	RDMT 1204
EMR 6R33-C32-250-3T	148	
EMR 6R33-C32-300-3T	180	
EMR 6R35-C32-150-3T	110	
EMR 6R35-C32-200-3T	120	
EMR 6R35-C32-250-3T	150	
EMR 6R35-C32-300-3T	190	RPMT 1204
EMR 6R35-C32-350-3T	280	
EMR 6R35-C32-400-3T	330	
EMR 6R40-C32-150-3T	150	
EMR 6R40-C32-200-3T	160	
EMR 6R40-C32-250-3T	160	
EMR 6R40-C32-300-3T	290	
EMR 6R40-C32-350-3T	300	
EMR 6R40-C32-400-3T	360	

## R2.5 EMR 圆鼻立铣刀 R2.5 EMR round nose end mill



- ★ 采用抗震特种工具钢材料。  
Special tool steel material.
- ★ 高精度、高品质。  
High precision and high quality.
- ★ 柄部细化处理、预防掉刀  
Handle thinning treatment, prevent the knife

型号 Cat.No	单价 (元)	适用刀片 Applicable inserts
EMR 2.5R10-C10-120-2T	120	RDMW0517
EMR 2.5R10-C10-150-2T	130	
EMR 2.5R12-C12-120-2T	120	
EMR 2.5R12-C12-150-2T	130	
EMR 2.5R16-C16-120-2T	120	
EMR 2.5R16-C16-150-2T	130	
EMR 2.5R16-C16-200-2T	136	RDMW0602
EMR 3R16-C15.6-150-2T	130	
EMR 3R16-C15.6-200-2T	136	
EMR 3R17-C16-150-2T	130	
EMR 3R17-C16-200-2T	136	
EMR 3R20-C20-150-2T	130	
EMR 3R20-C20-200-2T	136	
EMR 3R21-C20-150-2T	130	
EMR 3R21-C20-200-2T	136	
EMR 3.5R16-C15.6-150-2T	130	
EMR 3.5R16-C15.6-200-2T	136	
EMR 3.5R16-C16-150-2T	130	
EMR 3.5R16-C16-200-2T	136	
EMR 3.5R17-C16-150-2T	130	
EMR 3.5R17-C16-200-2T	136	
EMR 3.5R20-C20-150-2T	130	
EMR 3.5R20-C20-200-2T	136	
EMR 3.5R21-C20-150-2T	130	
EMR 3.5R21-C20-200-2T	136	

注：库存型号繁多，页面有限，请咨询我公司。  
Note: the inventory model is various, the page is limited, please consult our company.



## AJX 快进给立铣刀 AJX high feedrate end mill



- ★ 采用抗震特种工具钢材料。  
Special tool steel material.
- ★ 高精度、高品质。  
High precision and high quality.
- ★ 柄部细化处理、预防掉刀  
Handle thinning treatment, prevent the knife

型号 Cat.No	单价 (元)	适用刀片 Applicable inserts
AJX06-16-C16-120-2T	140	JOMT06T215 ZZSR
AJX06-16-C16-150-2T	150	
AJX06-16-C16-200-2T	160	
AJX06-17-C16-150-2T	150	
AJX06-17-C16-200-2T	160	
AJX08-20-C20-120-2T	140	JOMT080320 ZZSR
AJX08-20-C20-150-2T	150	
AJX08-20-C20-200-2T	160	
AJX08-21-C20-150-2T	160	
AJX08-21-C20-200-2T	170	
AJX09-25-C25-150-2T	170	JOMT09T320 ZSR
AJX09-25-C25-200-2T	180	
AJX09-25-C25-250-2T	210	
AJX09-26-C25-150-2T	170	
AJX09-26-C25-200-2T	180	
AJX09-26-C25-250-2T	210	
AJX12-32-C32-150-2T	180	JDMT120420 ZSR
AJX12-32-C32-200-2T	190	
AJX12-32-C32-250-2T	230	
AJX12-35-C32-150-2T	190	
AJX12-35-C32-200-2T	200	
AJX12-35-C32-250-2T	240	

## EXP 快进给立铣刀 EXP high feedrate end mill



- ★ 采用抗震特种工具钢材料。  
Special tool steel material.
- ★ 高精度、高品质。  
High precision and high quality.
- ★ 柄部细化处理、预防掉刀  
Handle thinning treatment, prevent the knife

型号 Cat.No	单价 (元)	适用刀片 Applicable inserts
EXP05-20-C20-120-2T	140	WPMW05 H315ZPR
EXP05-20-C20-150-2T	150	
EXP05-20-C20-200-2T	160	
EXP05-21-C20-120-2T	140	
EXP05-21-C20-150-2T	150	
EXP05-21-C20-200-2T	160	WPMW06 X415ZPR
EXP06-25-C25-120-2T	140	
EXP06-25-C25-150-2T	150	
EXP06-25-C25-200-2T	160	
EXP06-26-C25-200-2T	170	
EXP06-32-C32-150-3T	180	
EXP06-32-C32-200-3T	190	
EXP06-32-C32-250-3T	240	
EXP06-33-C32-150-3T	180	
EXP06-33-C32-200-3T	190	
EXP06-33-C32-250-3T	240	
EXP06-35-C32-150-3T	200	
EXP06-35-C32-200-3T	210	
EXP06-35-C32-250-3T	250	
EXP06-40-C32-150-3T	210	
EXP06-40-C32-200-3T	220	
EXP06-40-C32-250-3T	270	
EXP06-40-C32-300-3T	300	
EXP06-40-C42-300-3T	360	

注：库存型号繁多，页面有限，请咨询我公司。  
Note: the inventory model is various, the page is limited, please consult our company.

## SKS 快进给立铣刀 SKS high feedrate end mill



- ★ 采用抗震特种工具钢材料。  
Special tool steel material.
- ★ 高精度、高品质。  
High precision and high quality.
- ★ 柄部细化处理、预防掉刀  
Handle thinning treatment, prevent the knife

型号 Cat.No	单价 (元)	适用刀片 Applicable inserts
SKS05-20-C20-150-2T	140	WPMW05 0316ZTR WDHW05 0316ZTR
SKS05-20-C20-200-2T	150	
SKS06-21-C20-150-2T	140	
SKS06-21-C20-200-2T	150	WPMW06 T320ZTR WDHW06 0320ZTR
SKS06-25-C25-150-2T	150	
SKS06-25-C25-200-2T	160	
SKS06-30-C32-150-2T	170	
SKS06-30-C32-200-2T	180	
SKS06-32-C32-150-2T	180	
SKS06-32-C32-200-2T	190	WDMW08 0520ZTR WDMT08 0520ZER WDHW08 0520ZTR
SKS08-30-C32-150-2T	170	
SKS08-30-C32-200-2T	180	
SKS08-32-C32-150-2T	180	
SKS08-32-C32-200-2T	190	
SKS08-33-C32-150-2T	190	
SKS08-33-C32-200-2T	200	
SKS08-40-C32-150-2T	200	
SKS08-40-C32-200-2T	220	

注：库存型号繁多，页面有限，请咨询我公司。  
Note: the inventory model is various, the page is limited, please consult our company.

## T2139 球形精铣刀 T2139 copy end fine mill



- ★ 采用抗震特种工具钢材料。  
Special tool steel material.
- ★ 高精度、高品质。  
High precision and high quality.
- ★ 柄部细化处理、预防掉刀  
Handle thinning treatment, prevent the knife

型号 Cat.No	单价 (元)	适用刀片 Applicable inserts
T2139-4R-100-C10	120	P 320□-D08
T2139-4R-130-C12	120	
T2139-4R-150-C16	150	
T2139-5R-120-C10	120	P 320□-D10
T2139-5R-150-C12	120	
T2139-5R-150-C16	150	
T2139-6R-130-C12	120	P 320□-D12
T2139-6R-150-C12	120	
T2139-6R-150-C16	150	
T2139-6R-200-C16	180	P 320□-D16
T2139-8R-150-C16	150	
T2139-8R-200-C16	160	
T2139-8R-200-C20	160	P 320□-D20
T2139-8R-250-C25	240	
T2139-10R-150-C20	160	
T2139-10R-200-C20	170	P 320□-D25
T2139-10R-250-C20	250	
T2139-10R-300-C32	300	
T2139-12.5R-150-C25	240	P 320□-D25
T2139-12.5R-200-C25	280	
T2139-12.5R-250-C25	320	
T2139-12.5R-300-C25	360	P 320□-D30
T2139-12.5R-300-C32	400	
T2139-15R-150-C32	260	
T2139-15R-200-C32	300	P 320□-D30
T2139-15R-250-C32	340	
T2139-15R-300-C32	380	
T2139-15R-350-C32	440	P 320□-D32
T2139-16R-150-C32	260	
T2139-16R-200-C32	300	
T2139-16R-250-C32	340	
T2139-16R-300-C32	380	
T2139-16R-350-C32	440	

注：库存型号繁多，页面有限，请咨询我公司。  
Note: the inventory model is various, the page is limited, please consult our company.



## BCF/BCFL 球形立铣刀 BCF/BCFL copy end mill



- ★ 采用抗震特种工具钢材料。 ★ 高精度、高品质。  
Special tool steel material. High precision and high quality.
- ★ 柄部细化处理、预防掉刀  
Handle thinning treatment, prevent the knife

型号 Cat.No	单价 (元)	适用刀片 Applicable inserts		
		亲刃	子刃	外周刃
BCF-10R-150-C20/C25	900			
BCF-10R-200-C25	1000			
BCF-10R-250-C25	1400			
BCF-10R-300-C25	1600			
BCF-12.5R-150-C25	1100			
BCF-12.5R-200-C25/C32	1400	ZCEWAT 100CE	ZCEWAT 100SE	CPMT 080204
BCF-12.5R-250-C32	1600			
BCF-12.5R-300-C32	1800			
BCF-15R-160-C32	1300			
BCF-15R-200-C32	1500			
BCF-15R-250-C32	1700			
BCF-15R-300-C32	1900			
BCF-15R-350-C32	1300			
BCF-16R-160-C32	1300			
BCF-16R-200-C32	1500			
BCF-16R-250-C32	1700			
BCF-16R-300-C32	1900	ZCEWAT 125CE	ZCEWAT 125SE	CPMT 090308
BCF-16R-350-C32	1300			
BCF-20R-200-C42	2000			
BCF-20R-250-C42	2200			
BCF-20R-300-C42	2400			
BCF-20R-350-C42	2600			
BCF-20R-200-MT5	2200			
BCF-20R-250-MT5	1400			
BCF-25R-200-C50.8	2300			
BCF-25R-250-C50.8	2500			
BCF-25R-300-C50.8	2700	ZCEWAT 250CE	ZCEWAT 250SE	CPMT 120408
BCF-25R-350-C50.8	3000			
BCF-25R-400-C50.8	3600			
BCF-25R-200-MT5	3700			
BCF-25R-250-MT5	3000			

型号 Cat.No	单价 (元)	适用刀片 Applicable inserts		
		亲刃	子刃	外周刃
BCFL-10R-150-C20	1000			
BCFL-10R-150-C25	1000			
BCFL-10R-200-C25	1300			
BCFL-10R-250-C25	1500			
BCFL-10R-300-C32	1700			
BCFL-12.5R-150-C25	1200	ZCEWAT 100CE	ZCEWAT 100SE	CPMT 080204
BCFL-12.5R-200-C25	1500			
BCFL-12.5R-200-C32	1500			
BCFL-12.5R-250-C32	1700			
BCFL-12.5R-300-C32	1900			
BCFL-15R-160-C32	1400			
BCFL-15R-200-C32	1600			
BCFL-15R-250-C32	1800			
BCFL-15R-300-C32	2000			
BCFL-15R-350-C32	2400			
BCFL-16R-160-C32	1400			
BCFL-16R-200-C32	1600	ZCEWAT 125CE	ZCEWAT 125SE	CPMT 090308
BCFL-16R-250-C32	1800			
BCFL-16R-300-C32	2000			
BCFL-16R-350-C32	2400			
BCFL-20R-200-C42	2100			
BCFL-20R-250-C42	2300			
BCFL-20R-300-C42	2500			
BCFL-20R-350-C42	2700			
BCFL-20R-200-MT5	2300			
BCFL-20R-250-MT5	2500			
BCFL-25R-200-C50.8	2400	ZCEWAT 250CE	ZCEWAT 250SE	CPMT 120408
BCFL-25R-250-C50.8	2600			
BCFL-25R-300-C50.8	2800			
BCFL-25R-350-C50.8	3100			
BCFL-25R-400-C50.8	3700			
BCFL-25R-200-MT5	2800			
BCFL-25R-250-MT5	3100			

## AR 丸头型粗切削球形端铣刀 AR copy milling cutter



- ★ 采用抗震特种工具钢材料。 ★ 高精度、高品质。  
Special tool steel material. High precision and high quality.
- ★ 柄部细化处理、预防掉刀  
Handle thinning treatment, prevent the knife

型号 Cat.No	单价 (元)	适用刀片 Applicable inserts
AR40-MT4-201.5-3T	600	P26315-R20
AR50-MT4-181.5-4T	1200	P26315-R25

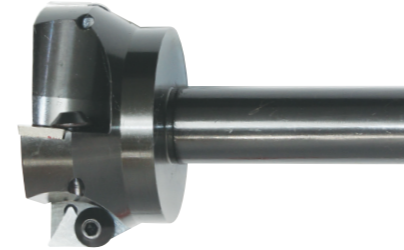
## GSKM 高速八角面铣刀 GSKM face milling cutter

库存刃径 (Inventory blade diameter) :  
Φ40、Φ50、Φ63、Φ80、Φ100、Φ125、Φ160、Φ200、Φ250、Φ300



型号 Cat.No	单价 (元)	适用刀片 Applicable inserts
GSK25-C25-120-2T	320	ODMT040408
GSK25-C25-120-2T	320	
GSK32-C25-120-3T	340	
GSK32-C32-120-3T	340	
GSK40-C32-120-4T	360	
GSK40-C32-120-4T	360	

## TP 台肩壳形铣刀 TP shoulder face mill



- ★ 采用抗震特种工具钢材料。 ★ 高精度、高品质。  
Special tool steel material. High precision and high quality.
- ★ 柄部细化处理、预防掉刀  
Handle thinning treatment, prevent the knife

型号 Cat.No	单价 (元)	适用刀片 Applicable inserts
TP16-30-C20-100-2T	140	TPMN1603 TPKN1603
TP16-32-C20-100-2T	140	
TP16-35-C20-100-2T	150	
TP16-35-C25-110-2T	150	
TP16-40-C20-110-3T	160	
TP16-40-C25-110-3T	160	
TP16-40-C25-110-3T	160	
TP22-50-C20-110-3T	170	
TP22-50-C32-115-3T	170	
TP22-63-C20-115-4T	180	
TP22-63-C25-115-4T	180	
TP22-63-C32-115-4T	180	
TP22-80-C20-120-5T	260	TPMN2204 TPKN2204 XPKR220412 XPKN220408
TP22-80-C25-120-5T	260	
TP22-80-C32-120-5T	260	

## SSP45° 定位倒角刀 SSP45° spot chamfer mill



型号 Cat.No	单价 (元)	适用刀片 Applicable inserts
SSP12-12-130-1T	160	TCMX1104
SSP20-20-130-1T	160	TCMX16T3
SSP20-20-150-1T	170	
SSP20-20-200-1T	180	
SSP25-20-130-1T	170	
SSP30-20-130-1T	180	
SSP32-25-130-1T	180	
SSP32-25-130-1T	180	

注：库存型号繁多，页面有限，请咨询我公司。  
Note: the inventory model is various, the page is limited, please consult our company.

## KM45° 立铣刀 KM45° end mill



- ★ 采用抗震特种工具钢材料。 ★ 高精度、高品质。  
Special tool steel material. High precision and high quality.
- ★ 柄部细化处理、预防掉刀  
Handle thinning treatment, prevent the knife

型号 Cat.No	单价 (元)	适用刀片 Applicable inserts
KM09-25-C20-120-2T	200	SEEX09T3
KM09-25-C25-120-2T	200	
KM09-32-C25-120-2T	220	
KM09-32-C32-120-2T	220	
KM12-32-C20-120-2T	220	SEHT1204
KM12-32-C25-120-2T	220	
KM12-32-C32-120-2T	220	
KM12-40-C20-120-3T	230	
KM12-40-C25-120-3T	230	
KM12-40-C32-120-3T	230	
KM12-50-C25-120-4T	240	
KM12-50-C32-120-4T	240	
KM12-63-C25-120-4T	260	
KM12-63-C32-120-4T	260	

## SSK45° 舍弃式倒角刀 SSK45° thorw-away chamfer mill



型号 Cat.No	单价 (元)	适用刀片 Applicable inserts
TAP 16-12-120-1T	160	APMT 1604
TAP 16-16-120-1T	160	
TAP 20-20-130-1T	160	
TAP 20-20-150-1T	170	
SSK16-12-120-1T	160	ADNT160308
SSK16-16-120-1T	160	
SSK20-20-130-1T	160	
SSK20-20-130-1T	160	
SSK20-20-150-1T	170	





### ATS T型槽端铣刀 ATS T-slots end mill



- ★ 采用抗震特种工具钢材料。 Special tool steel material.
- ★ 高精度、高品质。 High precision and high quality.
- ★ 柄部细化处理、预防掉刀 Handle thinning treatment, prevent the knife

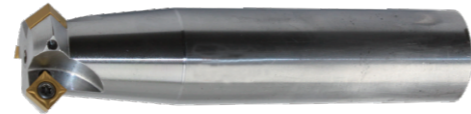
型号 Cat.No	单价 (元)	适用刀片 Applicable inserts
ATS20-C16-120-2T-06	300	CCMT060204
ATS25-C25-120-2T-06	300	CCMT060204
ATS30-C25-120-4T-06	360	CCMT060204
ATS32-C25-120-4T-08	360	CPMT080204
ATS35-C32-120-4T-09	360	CCMT09T304
ATS40-C32-120-4T-09	400	CCMT09T304
ATS45-C32-120-4T-09	400	CCMT09T304
ATS50-C32-120-4T-12	400	CCMT120404

### TP45° 倒角刀 Chamfering cutter



型号 Cat.No	单价 (元)	适用刀片 Applicable inserts
TP45°-20-C20-120-1T	160	TPKN1603
TP45°-30-C20-120-2T	240	TPKN2204
TP45°-32-C20-130-2T	240	TPKN2204

### 多功能倒角刀 Multi-function chamfering knife



型号 Cat.No	单价 (元)	适用刀片 Applicable inserts
SD45°-25-C20-120-2T	240	SDMB26152
SD45°-32-C20-120-2T	240	

### 反刮拉刀 Anti-scraper



单价 (元)	规格=最大反刮拉直径 D mm	d <sub>最小</sub> mm	L <sub>1</sub> mm	L <sub>2</sub> mm	L <sub>3</sub> mm	D <sub>1</sub> mm	e mm	L <sub>总</sub> mm	刀柄直径 h6 D <sub>s</sub> mm	转位刀片 ISO
600	15	9.2	55	42	35	25	3.55	105	20	CPMT 05T104
600	18	10.5	62	47	40	25	4.05	112	20	CCMT 060204
600	20	13.0	67	52	45	25	3.80	117	20	CCMT 060204
640	24	15.0	72	57	50	25	4.80	122	20	CCMT 060204
640	26	17.0	82	67	60	25	5.05	132	20	CCMT 060204
640	30	19.0	92	77	65	25	6.05	142	20	CCMT 060204
700	33	21.0	102	82	75	25	6.65	152	20	CCMT 09T304
700	36	23.0	113	93	85	40	7.05	173	32	CCMT 09T304
700	40	25.0	123	103	95	40	8.05	183	32	CCMT 09T304
760	43	30.0	123	103	95	40	7.05	183	32	CCMT 09T304
760	48	33.0	163	143	135	40	8.05	223	32	CCMT 09T304
860	53	36.0	140	-	110	-	9.05	210	40	CCMT 120404
860	57	39.0	150	-	120	-	9.55	220	40	CCMT 120404
1020	66	45.0	165	-	135	-	11.05	245	50	CCMT 120404
1420	76	52.0	185	-	155	-	12.55	265	50	CCMT 120404

### 套式T型槽铣刀 Sleeve T-slot cutter



型号 Cat.No	适用刀片 Applicable inserts	单价 (元)
TMP06-80X8-FMB22-8T	MPHT060304	720
TMP06-80X10-FMB22-8T		720
TMP06-100X8-FMB27-10T		960
TMP06-100X10-FMB27-10T		960
TMP06-125X8-FMB32-12T		1120
TMP06-125X10-FMB32-12T		1120
TMP08-100X12-FMB27-10T	MPHT080305	960
TMP08-125X12-FMB32-12T		1120
TMP08-160X12-FMB40-12T		1320
TMP08-200X12-FMB40-14T		1560
TMP08-250X12-FMB40-16T		2200

型号 Cat.No	适用刀片 Applicable inserts	单价 (元)
TMP12-125X16-FMB32-8T	MPHT120408	1050
TMP12-125X20-FMB32-8T		1050
TMP12-160X14-FMB40-10T		1050
TMP12-160X16-FMB40-10T		1260
TMP12-160X18-FMB40-10T		1260
TMP12-160X20-FMB40-10T		1260
TMP12-200X14-FMB40-12T		1560
TMP12-200X16-FMB40-12T		1560
TMP12-200X18-FMB40-12T		1560
TMP12-200X20-FMB40-12T		1560
TMP12-250X16-FMB40-14T		2100
TMP12-250X20-FMB40-14T		2100

### 三面刀片式刀盘 Three blade blade cutter



型号 Cat.No	适用刀片 Applicable inserts	单价 (元)
TMP06-80X8-K22-8T	MPHT060304	600
TMP06-80X10-K22-8T		600
TMP06-100X8-K27-10T		850
TMP06-100X10-K27-10T		850
TMP06-125X8-K32-12T		900
TMP06-125X10-K32-12T		900
TMP08-100X12-K27-10T	MPHT080305	850
TMP08-125X12-K32-12T		900
TMP08-160X12-K40-12T		980
TMP08-200X12-K40-14T		1360
TMP08-250X12-K50-16T		1880

型号 Cat.No	适用刀片 Applicable inserts	单价 (元)
TMP12-125X16-K32-8T	MPHT120408	880
TMP12-125X20-K32-8T		880
TMP12-160X14-K40-10T		980
TMP12-160X16-K40-10T		980
TMP12-160X18-K40-10T		980
TMP12-160X20-K40-10T		980
TMP12-200X14-K40-10T		1260
TMP12-200X16-K40-12T		1260
TMP12-200X18-K40-12T		1260
TMP12-200X20-K40-12T		1260
TMP12-250X16-K50-14T		1780
TMP12-250X20-K50-14T		1780



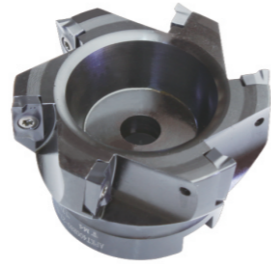
**TAP 直角台肩壳形铣刀**  
TAP right angle shoulder face mill



600直径可订做

型号 Cat.No	单价 (元)	适用刀片 Applicable inserts
TAP 300R40-16-4T	130	APMT 1135 PDER
TAP 300R40-22-4T	130	
TAP 300R50-22-4T	110	
TAP 300R50-22-5T	160	
TAP 300R63-22-4T	120	
TAP 300R63-22-5T	180	
TAP 300R80-27-6T	240	
TAP 300R100-32-6T	320	
TAP 300R125-40-6T	480	
TAP 400R40-16-3T	125	
TAP 400R40-16-4T	130	
TAP 400R40-22-3T	125	
TAP 400R50-22-4T	110	
TAP 400R63-22-4T	120	
TAP 400R63-22-5T	150	
TAP 400R80-27-5T	200	
TAP 400R80-27-6T	220	
TAP 400R100-32-6T	280	
TAP 400R125-40-6T	360	
TAP 400R125-40-7T	420	
TAP 400R160-40-8T	700	
TAP 400R200-60-10T	1100	
TAP 400R250-60-12T	2050	
TAP 400R315-60-16T	4600	
TAP 400R350-60-18T	6500	
TAP 400R400-60-18T	7800	

**直角面铣刀盘 APKT 刀片**  
Right Angle face milling cutter APKT blade



型号 Cat.No	单价 (元)	适用刀片 Applicable inserts	
APKT 40-16-3T	150	APKT 1135	
APKT 50-22-4T	140		
APKT 63-22-4T	150		
APKT 63-22-5T	180		
APKT 50-22-4T	140		APKT 1604
APKT 63-22-4T	150		
APKT 63-22-5T	180		
APKT 80-27-5T	240		
APKT 80-27-6T	260		
APKT 100-32-6T	320		
APKT 125-40-6T	420		
APKT 125-40-7T	480		
APKT 160-40-8T	560		
APKT 200-60-10T	1200		
APKT 250-60-12T	2400		
APKT 50-25.4-4T	160		
APKT 63-25.4-4T	170		
APKT 63-25.4-5T	180		
APKT 80-25.4-5T	300		
APKT 80-25.4-6T	320		
APKT 100-31.75-6T	400		
APKT 125-38.1-6T	600		

**AHUB 直角台肩壳形铣刀**  
AHUB right angle shoulder face mill



型号 Cat.No	单价 (元)	适用刀片 Applicable inserts
AHUB 15-50-22-4T	230	JDMT 1505 R
AHUB 15-63-22-4T	240	
AHUB 15-63-22-5T	260	
AHUB 15-80-27-6T	360	
AHUB 15-100-32-6T	400	
AHUB 15-125-40-6T	520	
AHUB 15-160-40-8T	800	
AHUB 15-200-60-10T	1300	
AHUB 15-250-60-12T	2600	
AHUB 15-50-25.4-4T	300	
AHUB 15-63-25.4-4T	320	
AHUB 15-63-25.4-5T	360	
AHUB 15-80-25.4-6T	400	
AHUB 15-100-31.75-6T	480	
AHUB 15-125-38.1-6T	600	

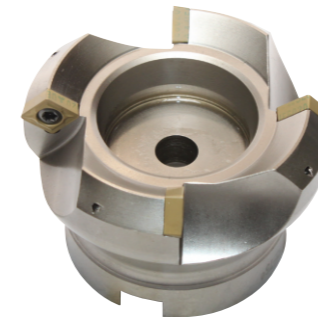
**KM45° SE1204/SE13T3 刀片**  
KM45° SE1204/SE13T3The blade



600直径可订做

型号 Cat.No	单价 (元)	适用刀片 Applicable inserts
KM-50-22-4T	150	SEEX09T3
KM-63-22-4T	170	
KM-50-22-4T	150	SEMT13T3 SEKT1204 SEHT1204
KM-63-22-4T	170	
KM-80-27-5T	270	
KM-100-32-5T	360	
KM-125-40-6T	560	
KM-160-40-7T	800	
KM-200-60-10T	1360	
KM-250-60-12T	2300	
KM-300-60-14T	4800	
KM-315-60-14T	5200	
KM-350-60	6000	
KM-400-60	8000	

**CCMT12刀片45° / 75° 二次利用刀片**  
CCMT12 blade 45° 75° / secondary use of the blade



型号 Cat.No	单价 (元)	适用刀片 Applicable inserts
CCMT 50-22-4T	240	CCMT06 CCMT08 CCMT09 CCMT12
CCMT 63-22-4T	260	
CCMT 80-27-5T	360	
CCMT 100-32-6T	400	
CCMT 125-40-6T	700	
CCMT 160-40-8T	1000	
CCMT 200-60-8T	1700	
CCMT 250-60-12T	2600	
CCMT 315-60-16T	6000	
CCMT 350-60	6600	
CCMT 400-60	8000	

**CNMG12刀片45° / 75° 二次利用刀片**  
CNMG12 blade 45° 75° / secondary use of the blade



型号 Cat.No	单价 (元)	适用刀片 Applicable inserts
CNMG 50-22-3T	300	CNMG1204
CNMG 63-22-4T	360	
CNMG 80-27-5T	420	
CNMG 100-32-6T	600	
CNMG 125-40-6T	800	
CNMG 160-40-7T	1200	
CNMG 200-40-9T	1700	
CNMG 250-60-12T	2600	
CNMG 315-60-16T	6000	
CNMG 350-60		
CNMG 400-60		

**面铣刀盘横向75° 二次利用刀盘**  
Face milling cutter transverse 75° secondary use of the knife dish



型号 Cat.No	单价 (元)	适用刀片 Applicable inserts
RAP 300R50-22-4T	140	APMT1135PD
RAP 300R63-22-4T	150	
RAP 300R80-27-5T	270	
RAP 300R100-32-5T	330	
RAP 300R125-32-6T	520	
RAP 400R50-22-4T	140	APMT1604PD
RAP 400R63-22-4T	150	
RAP 400R80-27-5T	270	
RAP 400R100-32-6T	330	
RAP 400R125-40-6T	460	
RAP 400R160-40-7T	760	
RAP 400R200-60-9T	1160	
RAP 400R250-60-10T	2200	
RAP 400R315-60-14T	5400	
RAP 400R350-60	6600	
RAP 400R400-60	8000	



**ASR/ASF 快进给壳形铣刀**  
ASR/ASF high feedrate face mill



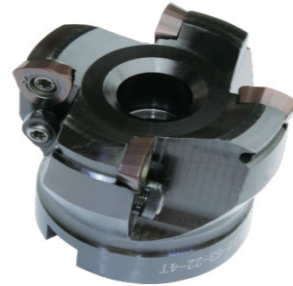
型号 Cat.No	单价 (元)	适用刀片 Applicable inserts
ASR 50-22-4T	240	EPNM0603TN-8 EPMT0603TN-8
ASR 50-25.4-4T	260	
ASF 63-22-3T	240	
ASF 63-22-4T	260	
ASF 80-27-4T	320	SD1505ZD
ASF 80-27-5T	340	
ASF 100-32-5T	390	
ASF 125-40-6T	600	
ASF 160-40-8T	900	
ASF 200-60-8T	1700	
ASF 200-60-10T	1900	
ASF 63-25.4-3T	260	
ASF 63-25.4-4T	260	
ASF 80-25.4-5T	350	
ASF 80-25.4-6T	350	
ASF 100-31.75-5T	390	

**TXP 快进给壳形铣刀**  
TXP high feedrate face mill



型号 Cat.No	单价 (元)	适用刀片 Applicable inserts
TXP06 50-22-4T	210	WPMW06X415
TXP06-50-25.4-4T	260	
TXP08-50-22-3T	210	
TXP08-63-22-4T	220	
TXP08-80-27-4T	340	WPMW080615
TXP08-80-27-5T	360	
TXP08-100-32-5T	400	
TXP08-50-25.4-3T	260	
TXP08-63-25.4-4T	280	
TXP08-80-25.4-4T	400	
TXP08-100-31.75-5T	480	

**AJX 快进给快进给刀盘1204刀片/1205刀片**  
AJX fast-forward to fast forward to 1204 blade cutter / 1205 blades



型号 Cat.No	单价 (元)	适用刀片 Applicable inserts
AJX12-50-22-3T	210	JDMW120420
AJX12-50-22-4T	220	
AJX12-63-22-4T	240	
AJX12-80-27-5T	360	
AJX12-100-32-5T	400	
AJX12-125-40-6T	600	
AJX12-63-25.4-4T	280	
AJX12-80-25.4-5T	400	
AJX12-100-31.75-5T	480	
AJX14-63-22-4T	240	
AJX14-80-27-4T	320	
AJX14-80-27-5T	360	
AJX14-100-32-5T	400	
AJX14-125-40-6T	600	

**SKS 快进给壳形铣刀**  
SKS high feedrate face mill



型号 Cat.No	单价 (元)	适用刀片 Applicable inserts
SKS06-40-16-3T	210	WDMW060520ZTR
SKS08-50-22-3T	210	WDMW080520ZTR
SKS08-63-22-3T	220	
SKS08-63-22-4T	240	
SKS08-63-25.4-4T	260	
SKS08-80-27-5T	360	
SKS08-100-32-6T	400	
SKS10-63-22-4T	240	WDMT10X620ZTR
SKS10-63-25.4-4T	260	
SKS10-80-27-5T	360	
SKS10-80-31.75-5T	400	
SKS10-100-32-5T	400	
SKS10-100-31.75-5T	480	
SKS10-125-40-6T	600	
SKS10-160-40-7T	900	

**EMR 5R 圆鼻铣刀 不通用**  
EMR round dowel face mill



型号 Cat.No	单价 (元)	适用刀片 Applicable inserts
5R40-16-4T	130	PRMW 1003 MO
5R40-22-4T	130	
5R50-22-4T	110	
5R63-22-4T	120	
5R63-22-5T	170	
5R80-27-5T	200	
5R80-27-6T	240	
5R100-32-6T	290	
5R125-40-6T	360	
5R160-40-8T	700	
5R200-60-10T	1100	
5R250-60-12T	2100	

**TRS EMRW 5R 圆鼻铣刀 通用**  
TPS round dowel face mill



型号 Cat.No	单价 (元)	适用刀片 Applicable inserts
5R40-16-4T	130	PRMW 1003 MO  REMW 10T3 MO
5R40-22-4T	130	
5R50-22-4T	110	
5R63-22-4T	120	
5R63-22-5T	140	
5R80-27-5T	190	
5R80-27-6T	200	
5R100-32-6T	290	
5R125-40-6T	360	
5R160-40-8T	700	
5R200-60-10T	1100	
5R250-60-12T	2100	

**圆鼻铣刀盘 6R EMR TRS EMRW 通用**



型号 Cat.No	单价 (元)	适用刀片 Applicable inserts
6R40-16-3T	130	RPMW1204MO  RPMT1204MO  RDMT1204MO
6R50-22-4T	110	
6R63-22-4T	120	
6R63-22-5T	150	
6R80-27-5T	200	
6R80-27-6T	240	
6R100-32-6T	290	
6R125-40-6T	360	
6R160-40-8T	700	
6R200-60-10T	1100	
6R250-60-12T	2100	

**8R 圆鼻铣刀盘 TRS EMR EMRW  
RCKT 不通用**



型号 Cat.No	单价 (元)	适用刀片 Applicable inserts
8R50-22-3T	130	RCHT1605MO RDMT1605MO RDMW1605MO RDMT1605MO RPMW1605MO
8R63-22-4T	140	
8R80-27-5T	220	
8R100-32-6T	290	
8R125-40-6T	380	
8R160-40-7T	760	
8R200-60-9T	1200	
8R250-60-10T	2200	



**TR200 圆鼻壳形铣刀**  
TR200 round dowel face mill



型号 Cat.No	单价 (元)	适用刀片 Applicable inserts	
5R50-22-4T	110	RCKT10T3MO	
5R63-22-4T	120		
5R63-22-5T	170		
5R80-27-5T	200		
5R80-27-6T	240		
5R100-32-6T	290		
5R125-40-6T	360		
5R160-40-8T	700		
5R200-60-10T	1100		
5R250-60-12T	2100		
6R50-22-4T	110		RCKT1204MO
6R63-22-4T	120		
6R63-22-5T	170		
6R80-27-5T	200		
6R80-27-6T	240		
6R100-32-6T	290		
6R125-40-6T	360		
6R160-40-8T	700		
6R200-60-10T	1100		
6R250-60-12T	2100		

**TP 快进给壳形铣刀**  
TP high feedrate face mill



型号 Cat.No	单价 (元)	适用刀片 Applicable inserts
TP11 40-16-4T	160	TPMN11
TP11-50-22-4T	160	
TP16-50-22-4T	160	TPMN1603
TP16-63-22-4T	170	
TP22-50-22-3T	160	TPKN220408
TP22-63-22-3T	160	
TP22-63-22-4T	170	
TP22-80-27-5T	260	
TP22-100-32-5T	320	
TP22-125-40-6T	420	
TP22-160-40-7T	700	TPKN220412
TP22-200-60-9T	1300	
TP22-250-60-12T	2100	

**SGP 直角壳形平面铣刀**  
SGP square shoulder milling cutter



★ 采用抗震性工具钢材质。  
Using tool steel material vibration resistance.

型号 Cat.No	单价 (元)	适用刀片 Applicable inserts
SGP 50-22-4T	220	SPMT120408
SGP 63-22-4T	240	
SGP 63-22-5T	280	
SGP 80-27-5T	360	
SGP 100-32-6T	400	
SGP 125-40-6T	560	
SGP 160-40-8T	900	
SGP 200-60-10T	1300	
SGP 250-60-10T	3000	
SGP 160-40-14T	2000	

**GSKM 高速八角面铣刀**  
GSKM face milling cutter



★ 采用抗震性工具钢材质。  
Using tool steel material vibration resistance.

型号 Cat.No	单价 (元)	适用刀片 Applicable inserts
GSKM 50-22-4T		
GSKM 63-22-5T		
GSKM 63-25.4-5T		
GSKM 80-27-6T		
GSKM 80-25.4-6T		
GSKM 100-32-7T		
GSKM 100-31.75-7T		
GSKM 125-40-8T		
GSKM 125-38.1-8T		
GSKM 160-40-10T		
GSKM 200-60-12T		

**刀垫式 GMA GM 硬质合金可转位面铣刀Kr75°**  
**刀垫式 ZMA ZMB ZM 硬质合金可转位面铣刀Kr90°**



型号 Cat.No	单价 (元)	适用刀片 Applicable inserts
Φ63-22-4T	290	4160511
Φ80-27-4T	310	
Φ100-32-5T	350	
Φ125-40-6T	410	
Φ160-40-9T	550	
Φ200-60-12T	820	
Φ250-60-15T	1020	
Φ315-60-18T	1750	
Φ350-60-20T	2440	
Φ400-60-24T	2790	
Φ450-60-26T	3320	
Φ500-60-30T	3750	
Φ630	6090	
Φ700	11370	
Φ800	16650	

**压块式 CMA 硬质合金可转位面铣刀Kr75°**  
**压块式 SGM SGMA 硬质合金可转位面铣刀Kr45°**

型号 Cat.No	单价 (元)	适用刀片 Applicable inserts
Φ63-22-4T	360	ODMT0404
Φ80-27-4T	380	
Φ100-32-5T	440	
Φ125-40-6T	510	
Φ160-40-9T	660	
Φ200-60-12T	980	
Φ250-60-15T	1220	
Φ315-60-18T	2090	
Φ350-60-20T	2930	
Φ400-60-24T	3340	
Φ450-60-26T	3980	
Φ500-60-30T	4250	
Φ630	7122	
Φ800	19980	

**重型 ZMMA 硬质合金可转位刀垫式密齿面铣刀Kr90°**  
**重型 MMA 硬质合金可转位刀垫式密齿面铣刀Kr75°**

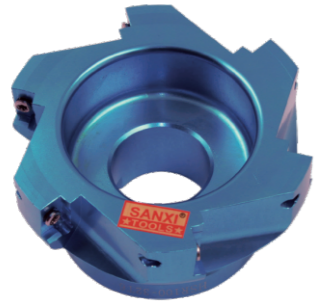
型号 Cat.No	单价 (元)	适用刀片 Applicable inserts
Φ100-32-5T	470	
Φ125-40-6T	700	
Φ160-40-9T	900	
Φ200-60-12T	1300	
Φ250-60-15T	1700	
Φ315-60-18T	2400	
Φ350-60-20T	4050	
Φ400-60-24T	4900	
Φ450-60-24T	5400	
Φ500-60-30T	5700	

**SMD 硬质合金可转位二面刃 三面刃**  
SMD carbide indexable two side milling Three sides of the blade

型号 Cat.No	88° 菱形*12.5*4.5		88° 菱形*16*15.5*4.5		88° 菱形*19*18.5*4.5	
	单价(元)	厚度	单价(元)	厚度	单价(元)	厚度
100	310	16-18	340	19-28	378	29-33
125	390		428		477	
140	412		466		520	
150	460		506		548	
160	480		540		584	
175	570		633		691	
200	680		760		834	
250	830		919		1019	
280	980		1098		1204	
315	1200		1340		1476	
350	1330		1469		1617	
400	1820	1930	2132			
500	2340	2509	3065			

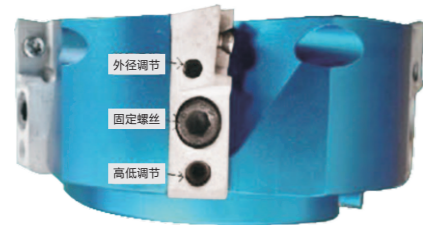


**铝合金刀体刀盘**  
**Aluminum alloy blade cutter**



**不带微调刀垫APKT16/90°**

型号 Cat.No	单价 (元)	适用刀片 Applicable inserts
AP16-40-16-3T-A	220	APKT1604PD
AP16-50-22-4T-A	220	
AP16-63-22-4T-A	240	
AP16-63-22-5T-A	280	
AP16-80-22-6T-A	320	
AP16-100-22-6T-A	410	
AP16-125-27-6T-A	560	
AP16-160-32-8T-A	800	
AP16-200-40-10T-A	1370	
AP16-250-40-12T-A	1800	
AP16-315-40-14T-A	3000	
AP16-350-40-16T-A	4200	
AP16-400-40-18T-A	5600	



**带刀垫微调APKT16/90°**

型号 Cat.No	单价 (元)	适用刀片 Applicable inserts
AP16-63-22-4T-B	800	APKT1604PD
AP16-80-22-6T-B	970	
AP16-100-22-6T-B	1200	
AP16-125-27-6T-B	1400	
AP16-160-32-6T-B	1800	
AP16-200-40-6T-B	2200	
AP16-250-40-12T-B	3000	
AP16-315-40-15T-B	4600	
AP16-400-60-18T-B	8000	

**不带微调刀垫SE1204/45°**  
Without trimming knife pad SE1204/45°



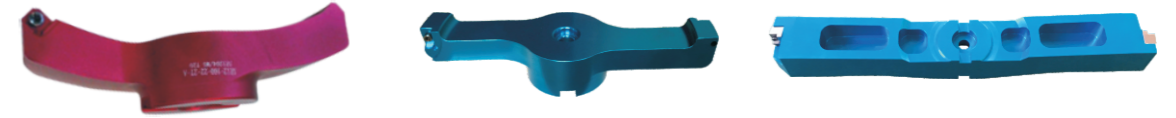
型号 Cat.No	单价 (元)	适用刀片 Applicable inserts
SE12-50-22-4T-A	280	SEHT1204
SE12-63-22-4T-A	280	
SE12-63-22-5T-A	300	
SE12-80-22-6T-A	420	
SE12-100-22-6T-A	510	
SE12-125-27-6T-A	760	
SE12-160-32-8T-A	900	
SE12-200-40-10T-A	1470	
SE12-250-40-10T-A	1900	
SE12-315-40-14T-A	3100	
SE12-350-40-16T-A	4300	
SE12-400-40-18T-A	5700	



**带刀垫微调SE1204/45°**

型号 Cat.No	单价 (元)	适用刀片 Applicable inserts
SE12-63-22-3T-B	900	SEHT1204HT
SE12-80-22-5T-B	1070	
SE12-100-22-6T-B	1300	
SE12-125-27-6T-B	1500	
SE12-160-32-8T-B	1900	
SE12-200-40-10T-B	2300	
SE12-250-40-12T-B	3000	
SE12-315-40-15T-B	4700	
SE12-400-60-18T-B	8100	

**双刃铝刀盘SE1024/45°**  
Double edged aluminum cutter SE1024/45



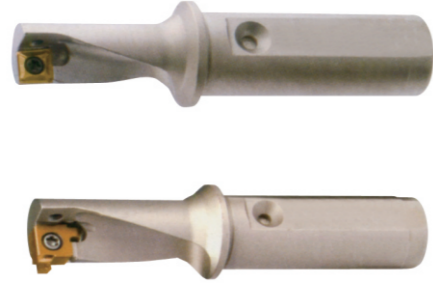
型号 Cat.No	单价 (元)	适用刀片 Applicable inserts
AP16/SE12-50-22-2T-A	200	APKT1604PD SEHT1204HT
AP16/SE12-63-22-2T-A	220	
AP16/SE12-80-22-2T-A	300	
AP16/SE12-100-22-2T-A	350	
AP16/SE12-125-22-2T-A	540	
AP16/SE12-160-22-2T-A	675	
AP16/SE12-170-22-2T-A	1100	
AP16/SE12-200-27-2T-A	1100	
AP16/SE12-250-32-2T-A	1400	
AP16/SE12-315-32-2T-A	2200	
AP16/SE12-350-32-2T-A	3000	
AP16/SE12-400-32-2T-A	3600	

**带刀垫微调SE1024/45°**  
With a knife to trim the SE1024/45

型号 Cat.No	单价 (元)	适用刀片 Applicable inserts
AP16/SE12-63-22-2T-B	720	APKT1604PD SEHT1204HT
AP16/SE12-80-22-2T-B	870	
AP16/SE12-100-22-2T-B	900	
AP16/SE12-125-22-2T-B	1100	
AP16/SE12-160-27-2T-B	1700	
AP16/SE12-200-27-2T-B	2100	
AP16/SE12-250-32-2T-B	2400	
AP16/SE12-315-32-2T-B	3200	
AP16/SE12-400-32-2T-B	4500	



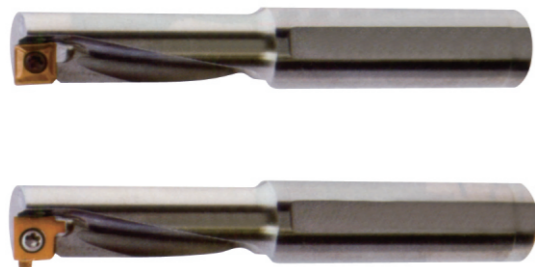
### 多功能快速钻 - 2.25xD Multi-function rapid drilling-2.25xD



钻孔公差(Hole tolerance) 0/+0.25mm  
钻头公差(Tolerance,D) 0/+0.20mm  
最大钻深(Max hole depth,L1) 2xD

型号 Cat.No	单价 (元)	适用刀片 Applicable inserts
SD08R/L-2.25D		XCMT 040104□□□
SD10R/L-2.25D		XCMT 050204□□□
SD12R/L-2.25D		XCMT 060204□□□
SD14R/L-2.25D		XCMT 070304□□□
SD16R/L-2.25D		XCMT 080304□□□
SD20R/L-2.25D		XCMT 10T304□□□
SD25R/L-2.25D		XCMT 130404□□□
SD32R/L-2.25D		XCMT 170508□□□

### 多功能快速钻 - 3.0xD Multi-function rapid drilling-3.0xD



钻孔公差(Hole tolerance) 0/+0.25mm  
钻头公差(Tolerance,D) 0/+0.20mm  
最大钻深(Max hole depth,L1) 2xD

型号 Cat.No	单价 (元)	适用刀片 Applicable inserts
SD08R/L-3.0D		XCMT 040104□□□
SD10R/L-3.0D		XCMT 050204□□□
SD12R/L-3.0D		XCMT 060204□□□
SD14R/L-3.0D		XCMT 070304□□□
SD16R/L-3.0D		XCMT 080304□□□
SD20R/L-3.0D		XCMT 10T304□□□
SD25R/L-3.0D		XCMT 130404□□□
SD32R/L-3.0D		XCMT 170508□□□

### SD 舍弃式快速钻头 SD throw-away high speed drill

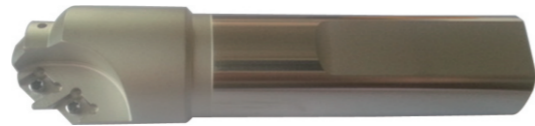


★ 采用抗震性工具钢材质。  
Using tool steel material vibration resistance.

钻孔公差(Hole tolerance) 0/+0.25mm  
钻头公差(Tolerance,D) 0/+0.20mm  
最大钻深(Max hole depth,L1) 2xD

型号 Cat.No	单价 (元)	适用刀片 Applicable inserts
C20-SD11.5-35L		XOMT04T103
C20-SD12-36L		
C20-SD12.5-38L		
C20-SD13-39L		
C20-SD13.5-41L		

### 扩孔刀 Reaming cutter



型号 Cat.No	单价 (元)	适用刀片 Applicable inserts
CA-1218-6.5	160	CCMT060204
CA-1521-6.5	160	
CA-1622-6.5	160	
CA-2026-6.5	170	
CA-2531-6.5	180	CCMT09T304
CA-2531-8.5	180	
CA-2531-10.5	180	
CA-3036-8.5	200	
CA-3036-10.5	200	
CA-3541-8.5	240	
CA-3541-10.5	240	
CA-4046-10.5	300	
CA-4248-10.5	300	
CA-4552-10.5	360	
CA-4855-10.5	360	
CA-5057-12.5	420	
CA-5562-10.5	420	
CA-6067-15.5	480	
CA-7077-12.5	560	
CA-7077-15.5	560	
CA-8088-15.5	630	
CA-8088-20.5	630	
CA-9098-20.5	720	

### WC 2倍快速钻 WC 2 times faster drilling



型号 Cat.No	单价 (元)	适用刀片 Applicable inserts		
C25-D15-30 A	340	WCMX030208 (住友)		
C25-D15.5-31 A				
C25-D16-32 A				
C25-D16.5-33 A				
C25-D17-34 A				
C25-D17.5-35 A				
C25-D18-36 A				
C25-D18.5-37 A				
C25-D19-38 A				
C25-D19.5-39 A				
C25-D20-40 A				
C25-D20.5-41 A				
C25-D21-42 A	460	WCMX040208 (住友)		
C25-D21.5-43 A				
C25-D225-44 A				
C25-D22.5-45 A				
C25-D23-46 A				
C25-D23.5-47 A				
C25-D24-48 A				
C25-D24.5-49 A				
C32-D25-50 A			518	WCMX050308 (住友)
C32-D25.5-51 A				
C32-D26-52 A				
C32-D26.5-53 A				
C32-D27-54 A				
C32-D27.5-55 A				
C32-D28-56 A				
C32-D28.5-57 A				
C32-D29-58 A				
C32-D29.5-59 A				
C32-D30-60 A				
C32-D30.5-61 A				
C32-D31-62 A	576	WCMT06T308 (住友)		
C32-D31.5-63 A				
C32-D32-64 A				
C32-D32.5-65 A				
C32-D33-66 A				
C32-D33.5-67 A				
C32-D34-68 A				
C32-D34.5-69 A				
C32-D35-70 A				
C32-D35.5-71 A				

型号 Cat.No	单价 (元)	适用刀片 Applicable inserts		
C32-D36-72 A	614	WCMT06T308 (住友)		
C32-D36.5-73 A				
C32-D37-74 A				
C32-D37.5-75 A				
C32-D38-76 A				
C32-D38.5-77 A				
C32-D39-78 A				
C32-D39.5-79 A				
C32-D40-80 A			806	WCMT080412 (住友)
C32-D40.5-81 A				
C32-D41-82 A				
C32-D41.5-83 A				
C40-D42-84 A				
C40-D43-86 A				
C40-D44-88 A				
C40-D45-90 A				
C40-D45.5-91 A				
C40-D46-92 A				
C40-D47-94 A				
C40-D48-96 A				
C40-D49-98 A	922	WCMT080412 (住友)		
C40-D49.5-99 A				
C40-D50-100 A				
C40-D51-102 A				
C40-D52-104 A				
C40-D53-106 A				
C40-D54-108 A				
C40-D55-110 A				
C40-D56-112 A				
C40-D57-114 A				
C40-D58-116 A				
C40-D59-118 A				
C40-D60-120 A	1113	WCMT080412 (住友)		
C40-D61-122 A				
C40-D62-124 A				
C40-D63-126 A				
C40-D64-128 A				
C40-D65-130 A				
C40-D66-132 A				
C40-D67-134 A				
C40-D68-136 A				
C40-D69-138 A				
C40-D70-140 A				
C40-D71-142 A				
C40-D72-144 A				
C40-D73-146 A	1190	WCMT080412 (住友)		
C40-D74-148 A				
C40-D75-150 A				
C40-D76-152 A				
C40-D77-154 A				
C40-D78-156 A				
C40-D79-158 A				
C40-D80-160 A				
C40-D81-162 A				
C40-D82-164 A				
C40-D83-166 A				
C40-D84-168 A				
C40-D85-170 A				
C40-D86-172 A	1305	WCMT080412 (住友)		
C40-D87-174 A				
C40-D88-176 A				
C40-D89-178 A				
C40-D90-180 A				
C40-D91-182 A				
C40-D92-184 A				
C40-D93-186 A				
C40-D94-188 A				
C40-D95-190 A				
C40-D96-192 A				
C40-D97-194 A				
C40-D98-196 A				
C40-D99-198 A	1600	WCMT06T308 (住友)		
C40-D100-200 A				



### WC 3倍快速钻 WC 3 times faster drilling



型号 Cat.No	单价 (元)	适用刀片 Applicable inserts	型号 Cat.No	单价 (元)	适用刀片 Applicable inserts
C25-D15-45 A	403	WCMX030208 (住友)	C32-D35.5-106.5 A	676	WCMT06T308 (住友)
C25-D15.5-46.5 A					
C25-D16-48 A					
C25-D16.5-49.5 A					
C25-D17-51 A					
C25-D17.5-52.5 A					
C25-D18-54 A					
C25-D18.5-55.5 A					
C25-D19-57 A					
C25-D19.5-58.5 A					
C25-D20-60 A					
C25-D20.5-61.5 A					
C25-D21-63 A					
C25-D21.5-64.5 A	500	WCMX040208 (住友)	C32-D36-108 A	806	WCMT080412 (住友)
C25-D22-66 A					
C25-D22.5-67.5 A					
C25-D23-69 A					
C25-D23.5-70.5 A					
C25-D24-72 A					
C25-D24.5-73.5 A					
C32-D25-75 A					
C32-D25.5-76.5 A					
C32-D26-78 A					
C32-D26.5-79.5 A					
C32-D27-81 A					
C32-D27.5-82.5 A					
C32-D28-84 A	576	WCMX050308 (住友)	C32-D36.5-109.5 A	1000	WCMT06T308 (住友)
C32-D28.5-85.5 A					
C32-D29-87 A					
C32-D29.5-88.5 A					
C32-D30-90 A					
C32-D30.5-91.5 A					
C32-D31-93 A					
C32-D31.5-94.5 A					
C32-D32-96 A					
C32-D32.5-97.5 A					
C32-D33-99 A					
C32-D33.5-100.5 A					
C32-D34-102 A					
C32-D34.5-103.5 A					
C32-D35-105 A	620	WCMT06T308 (住友)	C32-D37-111 A	1116	WCMT06T308 (住友)
C32-D37.5-112.5 A					
C32-D38-114 A					
C32-D38.5-115.5 A					
C32-D39-117 A					
C32-D39.5-118.5 A					
C32-D40-120 A					
C32-D40.5-121.5 A					
C32-D41-123 A					
C32-D41.5-124.5 A					
C40-D42-126 A					
C40-D43-129 A					
C40-D44-132 A					
C40-D45-135 A					
C40-D45.5-136.5	1190	WCMT06T308 (住友)	C40-D46-138 A	1500	WCMT06T308 (住友)
C40-D46-138 A					
C40-D47-141 A					
C40-D48-144 A					
C40-D49-147 A					
C40-D50-150 A					
C40-D51-153 A					
C40-D52-156 A					
C40-D53-159 A					
C40-D54-162 A					
C40-D55-165 A					
C40-D56-168 A					
C40-D57-171 A					
C40-D58-174 A					
C40-D59-177 A	1593	WCMT06T308 (住友)	C40-D60-180 A	1650	WCMT06T308 (住友)
C40-D61-183 A					
C40-D62-186 A					
C40-D63-189 A					
C40-D64-192 A					
C40-D65-195 A					
C40-D66-198 A					
C40-D67-201 A					
C40-D68-204 A					
C40-D68-204 A					
C40-D68-204 A					
C40-D68-204 A					
C40-D68-204 A					
C40-D68-204 A					
C40-D68-204 A					
C40-D68-204 A					

### WC 4倍快速钻 WC 4 times faster drilling



型号 Cat.No	单价 (元)	适用刀片 Applicable inserts	型号 Cat.No	单价 (元)	适用刀片 Applicable inserts
C25-D15-60 A	460	WCMX030208 (住友)	C32-D35.5-142 A	768	WCMT06T308 (住友)
C25-D15.5-62 A					
C25-D16-64 A					
C25-D16.5-66 A					
C25-D17-68 A					
C25-D17.5-70 A					
C25-D18-72 A					
C25-D18.5-74 A					
C25-D19-76 A					
C25-D19.5-78 A					
C25-D20-80 A					
C25-D20.5-82 A					
C25-D21-84 A					
C25-D21.5-86 A	576	WCMX040208 (住友)	C32-D36-144 A	960	WCMT080412 (住友)
C25-D22-88 A					
C25-D22.5-90 A					
C25-D23-92 A					
C25-D23.5-94 A					
C25-D24-96 A					
C25-D24.5-98 A					
C32-D25-100 A					
C32-D25.5-102 A					
C32-D26-104 A					
C32-D26.5-106 A					
C32-D27-108 A					
C32-D27.5-110 A					
C32-D28-112 A	643	WCMX050308 (住友)	C32-D36.5-146 A	1056	WCMT06T308 (住友)
C32-D28.5-114 A					
C32-D29-116 A					
C32-D29.5-118 A					
C32-D30-120 A					
C32-D30.5-122 A					
C32-D31-124 A					
C32-D31.5-126 A					
C32-D32-128 A					
C32-D32.5-130 A					
C32-D33-132 A					
C32-D33.5-134 A					
C32-D34-136 A					
C32-D34.5-138 A					
C32-D35-140 A	672	WCMT06T308 (住友)	C32-D37-148 A	1248	WCMT06T308 (住友)
C32-D37.5-150 A					
C32-D38-152 A					
C32-D38.5-154 A					
C32-D39-156 A					
C32-D39.5-158 A					
C32-D40-160 A					
C32-D40.5-162 A					
C32-D41-164 A					
C32-D41.5-166 A					
C40-D42-168 A					
C40-D43-172 A					
C40-D44-176 A					
C40-D45-180 A					
C40-D45.5-182 A	1440	WCMT06T308 (住友)	C40-D46-184 A	1632	WCMT06T308 (住友)
C40-D46-184 A					
C40-D47-188 A					
C40-D48-192 A					
C40-D49-196 A					
C40-D50-200 A					
C40-D51-204 A					
C40-D52-208 A					
C40-D53-212 A					
C40-D54-216 A					
C40-D55-220 A					
C40-D56-224 A					
C40-D57-228 A					
C40-D58-232 A					
C40-D59-236 A	1780	WCMT06T308 (住友)	C40-D60-240 A	1780	WCMT06T308 (住友)
C40-D61-244 A					
C40-D62-248 A					
C40-D63-252 A					
C40-D64-256 A					
C40-D65-260 A					
C40-D66-264 A					
C40-D67-268 A					
C40-D68-272 A					
C40-D68-272 A					
C40-D68-272 A					
C40-D68-272 A					
C40-D68-272 A					
C40-D68-272 A					
C40-D68-272 A					



## WC 5倍快速钻 WC 5 times faster drilling



型号 Cat.No	单价 (元)	适用刀片 Applicable inserts	型号 Cat.No	单价 (元)	适用刀片 Applicable inserts
C25-D17-85 A	600	WCMX030208 (住友)	C32-D35-175 A	912	WCMX06T308 (住友)
C25-D18-90 A	600		C32-D36-180 A	912	
C25-D19-95 A	600		C32-D37-185 A	912	
C25-D20-100 A	730	WCMX040208 (住友)	C32-D38-190 A	1104	WCMX06T308 (住友)
C25-D22-110 A	730		C32-D39-195 A	1104	
C25-D23-115 A	730		C32-D40-200 A	1104	
C25-D24-120 A	730	WCMX050308 (住友)	C32-D41-205 A	1104	WCMT080412 (住友)
C32-D25-125 A	730		C40-D42-210 A	1344	
C32-D27-135 A	850		C40-D43-215 A	1344	
C32-D28-140 A	850	WCMX06T308 (住友)	C40-D44-220 A	1344	WCMT080412 (住友)
C32-D29-145 A	855		C40-D49-245 A	1580	
C32-D30-150 A	860		C40-D50-250 A	1580	
C32-D31-155 A	870	WCMX06T308 (住友)	C40-D52-260 A	1680	WCMT080412 (住友)
C32-D32-160 A	912		C40-D55-275 A	1780	
C32-D33-165 A	920		C40-D60-300 A	1968	
C32-D34-170 A	925				

## U钻切削数据参考表

· 请使用刚性足够的机床和刀柄夹头。  
· 冷却液的工作压力与流量以下图为准。  
· 冷却液是发挥钻头性能的重要条件。

· 不能加工叠板。  
· 可转位钻头钻通孔时, 会产生圆盘状切屑。  
· 加工叠板时产生的圆盘状切屑会损伤钻头。

钻头直径	材质	转速	2D切削速度	3D切削速度	4D切削速度	5D切削速度
13-15.5	一般钢 特殊钢转速 降低20%~30%	2400-2800	F0.05-0.08 F120-140	F0.05-0.08 F120-140	F0.05-0.06 F120-130	
16-18.5		200-2200	F0.06-0.08 F120-140	F0.06-0.08 F120-140	F0.05-0.07 F110-130	
19-21.5		1800-2200	F0.08-0.1 F130-160	F0.08-0.1 F130-160	F0.07-0.09 F120-150	
22-24.5		1600-2000	F0.1-0.12 F150-180	F0.1-0.12 F150-180	F0.09-0.11 F140-170	
25-28.5		1400-1800	F0.11-0.13 F150-180	F0.11-0.13 F150-180	F0.1-0.14 F140-170	
29-30.5		1200-1600	F0.11-0.13 F130-160	F0.11-0.13 F130-160	F0.1-0.12 F120-150	
31-35.5		1100-1400	F0.11-0.13 F120-150	F0.11-0.13 F120-150	F0.1-0.12 F110-140	
36-39.5		1000-1300	F0.1-0.13 F110-140	F0.1-0.13 F110-140	F0.1-0.12 F100-130	
40-42.5		900-1200	F0.1-0.13 F90-110	F0.1-0.13 F90-110	F0.1-0.12 F80-100	
43-45.5		850-1100	F0.11-0.14 F85-100	F0.11-0.14 F85-100	F0.11-0.14 F75-90	
46-50.5		750-1000	F0.11-0.14 F70-90	F0.11-0.14 F70-90	F0.1-0.13 F65-90	
51-55.5		700-950	F0.11-0.14 F70-90	F0.11-0.14 F70-90	F0.1-0.12 F70-90	
56-60.5		650-850	F0.11-0.14 F70-90	F0.1-0.14 F70-90	F0.1-0.12 F60-80	
61-65		450-650	F0.11-0.14 F70-90	F0.1-0.14 F70-90	F0.1-0.12 F60-80	

## SP 2倍快速钻 SP 2 times faster drilling



型号 Cat.No	单价 (元)	适用刀片 Applicable inserts	型号 Cat.No	单价 (元)	适用刀片 Applicable
C25-D14-28 A	340	SPMG050204 (特固克)	C32-D35.5-71 A	620	SPMG110408 (特固克)
C25-D14.5-29 A			C32-D36-72 A		
C25-D15-30 A			C32-D36.5-73 A		
C25-D15.5-31 A			C32-D37-74 A		
C25-D16-32 A			C32-D37.5-75 A		
C25-D16.5-33 A			C32-D38-76 A		
C25-D17-34 A			C32-D38.5-77 A		
C25-D17.5-35 A			C32-D39-78 A		
C25-D18-36 A			C32-D39.5-79 A		
C25-D18.5-37 A			C32-D40-80 A		
C25-D19-38 A			C32-D40.5-81 A		
C25-D19.5-39 A			C32-D41-82 A		
C25-D20-40 A			C32-D41.5-83 A		
C25-D20.5-41 A			C40-D42-84 A		
C25-D21-42 A	460	SPMG060204 (特固克)	C40-D43-86 A	810	SPMG110408 (特固克)
C25-D21.5-43 A			C40-D44-88 A		
C25-D22-44 A			C40-D45-90 A		
C25-D22.5-45 A			C40-D45.5-91 A		
C25-D23-46 A			C40-D46-92 A		
C25-D23.5-47 A			C40-D47-94 A		
C25-D24-48 A			C40-D48-96 A		
C25-D24.5-49 A			C40-D49-98 A		
C32-D25-50 A			C40-D49.5-99 A		
C32-D25.5-51 A			C40-D50-100 A		
C32-D26-52 A			C40-D51-102 A		
C32-D26.5-53 A			C40-D52-104 A		
C32-D27-54 A			C40-D53-106 A		
C32-D27.5-55 A			C40-D54-108 A		
C32-D28-56 A	520	SPMG07T308 (特固克)	C40-D55-110 A	1120	SPMG140512 (特固克)
C32-D28.5-57 A			C40-D56-112 A		
C32-D29-58 A			C40-D57-114 A		
C32-D29.5-59 A			C40-D58-116 A		
C32-D30-60 A			C40-D59-118 A		
C32-D30.5-61 A			C40-D60-120 A		
C32-D31-62 A			C40-D61-122 A		
C32-D31.5-63 A			C40-D62-124 A		
C32-D32-64 A			C40-D63-126 A		
C32-D32.5-65 A			C40-D64-128 A		
C32-D33-66 A			C40-D65-130 A		
C32-D33.5-67 A			C40-D66-132 A		
C32-D34-68 A			C40-D67-134 A		
C32-D34.5-69 A			C40-D68-136 A		
C32-D35-70 A	580	SPMG090408 (特固克)	C40-D69-138 A	1610	SPMG140512 (特固克)
C32-D35.5-71 A			C40-D70-140 A		
C32-D36-72 A			C40-D71-142 A		
C32-D36.5-73 A			C40-D72-144 A		
C32-D37-74 A			C40-D73-146 A		
C32-D37.5-75 A			C40-D74-148 A		
C32-D38-76 A			C40-D75-150 A		
C32-D38.5-77 A			C40-D76-152 A		
C32-D39-78 A			C40-D77-154 A		
C32-D39.5-79 A			C40-D78-156 A		
C32-D40-80 A			C40-D79-158 A		
C32-D40.5-81 A			C40-D80-160 A		
C32-D41-82 A			C40-D81-162 A		
C32-D41.5-83 A			C40-D82-164 A		
C32-D42-84 A	620	SPMG110408 (特固克)	C40-D83-166 A	1620	SPMG140512 (特固克)
C32-D42.5-85 A			C40-D84-168 A		
C32-D43-86 A			C40-D85-170 A		
C32-D43.5-87 A			C40-D86-172 A		
C32-D44-88 A			C40-D87-174 A		
C32-D44.5-89 A			C40-D88-176 A		
C32-D45-90 A			C40-D89-178 A		
C32-D45.5-91 A			C40-D90-180 A		
C32-D46-92 A			C40-D91-182 A		
C32-D46.5-93 A			C40-D92-184 A		
C32-D47-94 A			C40-D93-186 A		
C32-D47.5-95 A			C40-D94-188 A		
C32-D48-96 A			C40-D95-190 A		
C32-D48.5-97 A			C40-D96-192 A		
C32-D49-98 A	C40-D97-194 A				
C32-D49.5-99 A	C40-D98-196 A				
C32-D50-100 A	C40-D99-198 A				
C32-D50.5-101 A	C40-D100-200 A				





### SP 3倍快速钻 SP 3 times faster drilling



型号 Cat.No	单价 (元)	适用刀片 Applicable inserts
C25-D14-42 A	405	SPMG050204 (特固克)
C25-D14.5-43.5 A		
C25-D15-45 A		
C25-D15.5-46.5 A		
C25-D16-48 A		
C25-D16.5-49.5 A		
C25-D17-51 A		
C25-D17.5-52.5 A		
C25-D18-54 A		
C25-D18.5-55.5 A		
C25-D19-57 A		
C25-D19.5-58.5 A		
C25-D20-60 A		
C25-D20.5-61.5 A		
C25-D21-63 A		
C25-D21.5-64.5 A		
C25-D22-66 A		
C25-D22.5-67.5 A		
C25-D23-69 A		
C25-D23.5-70.5 A		
C25-D24-72 A		
C25-D24.5-73.5 A		
C32-D25-75 A		
C32-D25.5-76.5 A		
C32-D26-78 A		
C32-D26.5-79.5 A		
C32-D27-81 A		
C32-D27.5-82.5 A		
C32-D28-84 A		
C32-D28.5-85.5 A		
C32-D29-87 A		
C32-D29.5-88.5 A		
C32-D30-90 A		
C32-D30.5-91.5 A		
C32-D31-93 A		
C32-D31.5-94.5 A		
C32-D32-96 A		
C32-D32.5-97.5 A		
C32-D33-99 A		
C32-D33.5-100.5 A		
C32-D34-102 A		
C32-D34.5-103.5 A		

型号 Cat.No	单价 (元)	适用刀片 Applicable
C32-D35-105 A	680	SPMG110408 (特固克)
C32-D35.5-106.5 A		
C32-D36-108 A		
C32-D36.5-109.5 A		
C32-D37-111 A		
C32-D37.5-112.5 A		
C32-D38-114 A		
C32-D38.5-115.5 A		
C32-D39-117 A		
C32-D39.5-118.5 A		
C32-D40-120 A		
C32-D40.5-121.5 A		
C32-D41-123 A		
C32-D41.5-124.5 A		
C40-D42-126 A		
C40-D43-129 A		
C40-D44-132 A		
C40-D45-135 A		
C40-D45.5-136.5 A		
C40-D46-138 A		
C40-D47-141 A		
C40-D48-144 A		
C40-D49-147 A		
C40-D50-150 A		
C40-D51-153 A		
C40-D52-156 A		
C40-D53-159 A		
C40-D54-162 A		
C40-D55-165 A		
C40-D56-168 A		
C40-D57-171 A		
C40-D58-174 A		
C40-D59-177 A		
C40-D60-180 A		
C40-D61-183 A		
C40-D62-186 A		
C40-D63-189 A		
C40-D64-192 A		
C40-D65-195 A		
C40-D66-198 A		
C40-D67-201 A		
C40-D68-204 A		

### SP 4倍快速钻 SP 4 times faster drilling

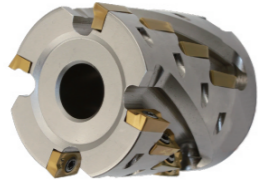


型号 Cat.No	单价 (元)	适用刀片 Applicable inserts
C25-D14-56 A	460	SPMG050204 (特固克)
C25-D14.5-58 A		
C25-D15-60 A		
C25-D15.5-62 A		
C25-D16-64 A		
C25-D16.5-66 A		
C25-D17-68 A		
C25-D17.5-70 A		
C25-D18-72 A		
C25-D18.5-74 A		
C25-D19-76 A		
C25-D19.5-78 A		
C25-D20-80 A		
C25-D20.5-82 A		
C25-D21-84 A		
C25-D21.5-86 A		
C25-D22-88 A		
C25-D22.5-90 A		
C25-D23-92 A		
C25-D23.5-94 A		
C25-D24-96 A		
C25-D24.5-98 A		
C32-D25-100 A		
C32-D25.5-102 A		
C32-D26-104 A		
C32-D26.5-106 A		
C32-D27-108 A		
C32-D27.5-110 A		
C32-D28-112 A		
C32-D28.5-114 A		
C32-D29-116 A		
C32-D29.5-118 A		
C32-D30-120 A		
C32-D30.5-122 A		
C32-D31-124 A		
C32-D31.5-126 A		
C32-D32-128 A		
C32-D32.5-130 A		
C32-D33-132 A		
C32-D33.5-134 A		
C32-D34-136 A		
C32-D34.5-138 A		

型号 Cat.No	单价 (元)	适用刀片 Applicable
C32-D35-140 A	770	SPMG110408 (特固克)
C32-D35.5-142 A		
C32-D36-144 A		
C32-D36.5-146 A		
C32-D37-148 A		
C32-D37.5-150 A		
C32-D38-152 A		
C32-D38.5-154 A		
C32-D39-156 A		
C32-D39.5-158 A		
C32-D40-160 A		
C32-D40.5-162 A		
C32-D41-164 A		
C32-D41.5-166 A		
C40-D42-168 A		
C40-D43-172 A		
C40-D44-176 A		
C40-D45-180 A		
C40-D45.5-182 A		
C40-D46-184 A		
C40-D47-188 A		
C40-D48-192 A		
C40-D49-196 A		
C40-D50-200 A		
C40-D51-204 A		
C40-D52-208 A		
C40-D53-212 A		
C40-D54-216 A		
C40-D55-220 A		
C40-D56-224 A		
C40-D57-228 A		
C40-D58-232 A		
C40-D59-236 A		
C40-D60-240 A		
C40-D61-244 A		
C40-D62-248 A		
C40-D63-252 A		
C40-D64-256 A		
C40-D65-260 A		
C40-D66-264 A		
C40-D67-268 A		
C40-D68-272 A		



## TAP 粗切削玉米铣刀 TAP roughing cut corn milling cutter



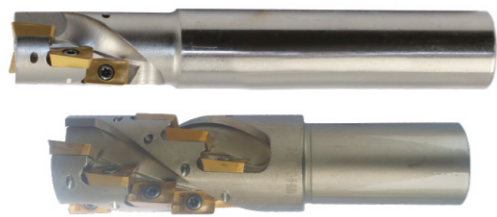
型号 Cat.No	单价 (元)	适用刀片 Applicable inserts
TAP16-D50-22-42M-3T-9P	700	APMT1604PD
TAP16-D50-22-42M-4T-12P	740	
TAP16-D63-27-42M-4T-12P	760	
TAP16-D50-22-60M-4T-16P	1000	
TAP16-D63-27-60M-4T-16P	1100	
TAP16-D80-32-72M-5T-25P	1700	
TAP16-D100-40-72M-6T-30P	2400	

## 玉米铣刀盘APKT16



型号 Cat.No	单价 (元)	适用刀片 Applicable inserts
APKT16-D50-22-42M-3T-12P	800	APKT1604PD
APKT16-D63-27-42M-4T-12P	860	
APKT16-D50-22-60M-4T-16P	1100	
APKT16-D63-27-60M-4T-16P	1200	
APKT16-D80-32-72M-5T-25P	1900	
APKT16-D100-40-72M-6T-30P	2600	

## TAP 粗切削直柄玉米铣刀 TAP roughing cut corn milling cutter



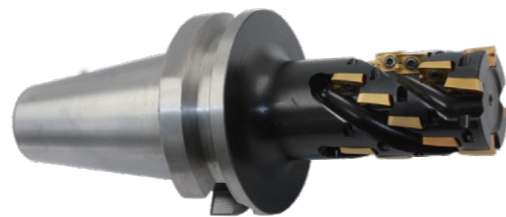
型号 Cat.No	单价 (元)	适用刀片 Applicable inserts
TAP11-20-C20-28M-2T-120	600	AP1135 AP1604
TAP11-25-C25-38M-2T-130	640	
TAP11-20-C20-48M-2T-130	700	
TAP11-25-C25-48M-2T-130	760	
TAP11-32-C32-48M-3T-140	1000	
TAP16-32-C32-70M-2T-150	700	
TAP16-40-C32-70M-2T-150	760	
TAP16-40-C32-70M-3T-150	1000	
TAP16-50-C32-70M-3T-150	1300	
TAP16-50-C32-100M-3T-150	1700	

## SP 壳式粗切削端铣刀 SP shell type rough cutting end mills



型号 Cat.No	单价 (元)	适用刀片 Applicable inserts
SP-50-22-42-3T	900	LPMT1504/ SPMT1204
SP-63-27-42-4T	1100	
SP-63-27-60-4T	1500	
SP-80-32-67M-5T	2000	
SP-100-40-67M-6T	3000	

## BT NT JT XT 粗切削

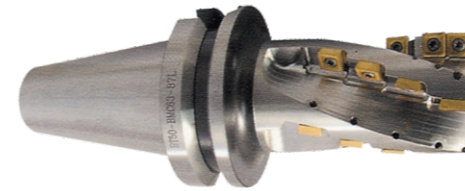


★ 采用抗震性工具钢材质。  
Using tool steel material vibration resistance.

型号 Cat.No	单价 (元)	适用刀片 Applicable inserts
BT40-D40-56M-3T-AP16	1720	APMT1604PD
BT40-D40-70M-3T-AP16	1860	
BT40-D45-56M-3T-AP16	1720	
BT40-D50-56M-4T-AP16	1960	
BT40-D50-70M-4T-AP16	2120	

型号 Cat.No	单价 (元)	适用刀片 Applicable inserts
BT50-D50-70M-3T-AP16	2200	APMT1604PD
BT50-D63-70M-4T-AP16	2300	
BT50-D63-85M-4T-AP16	2500	
BT50-D63-100M-4T-AP16	2940	
BT50-D80-99M-5T-AP16	3160	
BT50-D80-120M-5T-AP16	3560	
BT50-D100-118M-6T-AP16	4800	
BT50-D100-160M-6T-AP16	5200	
BT50-D100-280M-6T-AP16	6400	

## 普通刀片玉米铣刀 Ordinary corn milling cutter blade



★ 采用抗震特种工具钢材料。  
Special tool steel material.  
★ 柄部细化处理、预防掉刀  
Handle thinning treatment, prevent the knife  
★ 高精度、高品质。  
High precision and high quality.

型号 Cat.No	单价 (元)	适用刀片 Applicable inserts
D32-C32-M45-2T	916	
D40-C32-M52-3T	1376	
D50-C32-M56-3T	1300	
MTB4-D32-45(刃长)	916	
MTB4-D40-52(刃长)	1376	
MTB5-D40-52(刃长)	1376	
MTB5-D50-56(刃长)	1460	
BT50-D50-56(刃长)	1746	
BT50-D63-76(刃长)	2124	
BT50-D80-96(刃长)	3172	
BT50-D100-116(刃长)	3730	

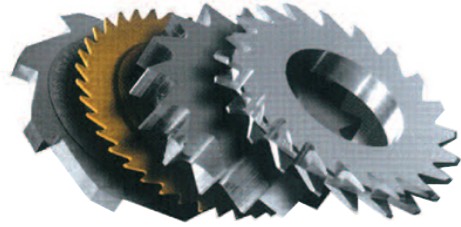
型号 Cat.No	单价 (元)	适用刀片 Applicable inserts
XT50-D50-56(刃长)无尾	1746	
XT50-D63-76(刃长)无尾	2124	
XT50-D80-96(刃长)无尾	3172	
XT50-D100-116(刃长)无尾	3730	
NT50-D50-56(刃长)有尾	1746	
NT50-D63-76(刃长)有尾	2124	
NT50-D80-96(刃长)有尾	3172	
NT50-D100-116(刃长)有尾	3730	
JT50-D50-56(刃长)	1746	
JT50-D63-76(刃长)	2124	
JT50-D80-96(刃长)	3172	
JT50-D100-116(刃长)	3730	

## 玉米铣刀切削对照表 Cutting table for corn milling cutter

工件材料	硬度	刀片			切削宽度ae(mm)		
		材料		断屑槽	≤ 0.15DC	0.15-0.3DC	DC(槽)
		第一推荐	第二推荐				
切削速度 VC(m/min)							
软钢	≤HB180	MP6120	VP15TF	M H	200(160-250)	160(120-200)	140(120-160)
		MP6130	VP20RT	M H	170(130-220)	130(90-170)	110(90-130)
碳钢、合金钢	HB180-350	MP6120	VP15TF	M H	160(120-200)	120(100-140)	100(80-120)
		MP6130	VP20RT	M H	130(90-170)	90(70-110)	70(50-90)
不锈钢	≤HB270	MP7130	VP15TF	M H	160(120-200)	120(100-140)	100(80-120)
灰铸铁	≤350MPA	MC5020	VP15TF	H	230(180-280)	190(140-240)	190(140-240)
球墨铸铁	≤800MPA	MC5020	VP15TF	H	190(140-220)	170(120-220)	170(120-220)
钛合金	≤HB350	MP9120	VP15TF	H M	50(40-70)		50(40-70)
		MP9130	VP20RT	H M	40(30-60)		40(30-60)
耐热合金	-	MP9120	VP15TF	H M	40(30-60)		40(30-60)
		MP9130	VP20RT	H M	30(20-40)		30(20-40)



## 硬质合金锯片 Carbide saw blade



规格 Specifications	无税价格 No tax price	规格 Specifications	无税价格 No tax price	规格 Specifications	无税价格 No tax price
12*0.1-0.2	20	50*0.15-0.25	45	90*1.4-1.6	140
12*0.3-1.0	17	50*0.3-0.4	35	90*1.9-2.1	169
12*1.1-2.0	18	50*0.5-0.8	39	90*2.4-2.6	200
12*2.1-3.0	19	50*0.9-1.2	44	90*2.9-3.1	228
12*3.1-4.0	20	50*1.3-1.6	56	90*3.4-3.6	258
20*0.1-0.2	22	50*1.7-2.1	64	90*3.8-4.0	289
20*0.3-1.0	20	50*2.2-2.4	69	100*0.4-0.5	124
20*1.1-1.5	21	50*2.5-2.8	77	100*0.6-0.8	114
20*1.6-2.0	22	50*2.9-3.2	84	100*0.9-1.2	144
20*2.1-2.5	23	50*3.3-3.7	92	100*1.3-1.6	168
20*2.6-3.0	24	50*3.8-4.1	100	100*1.8-2.1	208
20*3.1-4.0	26	60*0.2-0.3	62	100*2.2-2.5	235
25*0.1-0.2	24	60*0.4-0.8	54	100*2.6-3.0	275
25*0.3-0.6	21	60*0.9-1.2	65	100*3.1-3.4	300
25*0.7-1.0	22	60*1.3-1.7	79	100*3.5-3.8	328
25*1.1-1.5	23	60*1.8-2.2	92	100*3.9-4.1	350
25*1.6-2.0	24	60*2.3-2.6	101	110*0.5-0.6	156
25*2.1-2.5	26	60*2.7-3.1	115	110*0.7-1.1	161
25*2.6-3.0	28	60*3.2-3.6	129	110*1.4-1.6	210
25*3.1-3.5	30	60*3.7-4.1	142	110*1.9-2.1	250
25*3.6-4.0	32	75*0.3-0.4	75	110*2.4-2.6	295
30*0.1-0.2	29	75*0.5-0.8	72	110*2.9-3.1	340
30*0.3-0.6	24	75*0.9-1.2	85	125*0.5-0.6	210
30*0.7-1.0	26	75*1.3-1.7	105	125*0.8-1.1	218
30*1.1-1.5	29	75*1.8-2.2	126	125*1.4-1.6	275
30*1.6-2.0	32	75*2.3-2.6	143	125*1.9-2.1	331
30*2.1-2.5	36	75*2.7-3.1	166	125*2.4-2.6	387
30*2.6-3.0	40	75*3.2-3.6	190	125*2.9-3.1	444
30*3.1-3.5	45	75*3.7-4.0	212	125*3.4-3.6	500
30*3.6-4.0	49	80*0.35-0.45	95	125*3.9-4.1	556
40*0.1-0.2	34	80*0.5-0.8	88	150*0.55-0.65	318
40*0.3-0.4	31	80*0.9-1.1	99	150*0.8-1.1	333
40*0.5-0.9	34	80*1.2-1.6	119	150*1.2-1.5	399
40*1.0-1.4	40	80*1.7-2.1	141	150*1.6-1.8	448
40*1.5-1.8	45	80*2.2-2.6	164	150*1.9-2.1	495
40*1.9-2.1	48	80*2.7-3.1	187	160*0.7-1.1	395
40*2.2-2.5	53	80*3.2-3.6	215	160*1.3-1.6	486
40*2.6-2.9	58	80*3.7-4.0	231	170*0.8-1.1	468
40*3.0-3.3	63	90*0.4-0.5	108	180*0.8-1.1	480
40*3.4-3.6	68	90*0.6-0.9	100	200*0.9-1.2	690
40*3.7-4.0	73	90*1.0-1.3	123	250*1.1-1.6	1247

## 车刀系列 Tool series

型号 Cat.No		柄部尺寸	合金钢 单价 (元)	高速钢	柄部尺寸
内孔车刀	螺钉式	Φ6	90		Φ16
		Φ8	60		Φ20
		Φ10	60		Φ25
		Φ12	65		Φ32
	复合式	Φ14	68		Φ40
		Φ16	80		Φ32
		Φ20	100		Φ40
		Φ25	110		Φ50
型号 Cat.No		柄部尺寸	M型 单价 (元)	W型 单价 (元)	
外圆车刀		10×10			
		12×12			
		16×16	75	75	
		20×20	80	80	
		25×25	100	100	
		32×32	130	150	
		40×40	200	230	
型号 Cat.No		柄部尺寸	S型 单价 (元)	C型	
螺纹车刀	外螺纹刀	12×12	75		
		16×16	75		
		20×20	80		
		25×25	100		
		32×32	170		
		40×40	220		
	内螺纹刀	柄部尺寸	合金钢 单价 (元)	高速钢	柄部尺寸
		Φ8	70		Φ20
		Φ10	70		Φ25
		Φ12	75		Φ32
		Φ16	75		Φ40

## 车刀系列 Tool series

型号 Cat.No		柄部尺寸	ZQ 单价 (元)	MGEHR/L 单价 (元)	
切槽刀	外切槽刀	12×12	75		
		16×16	75	100	
		20×20	80	110	
		25×25	100	120	
		32×32	170	300	
		40×40	260	310	
		柄部尺寸	合金钢 单价 (元)	高速钢	柄部尺寸
		Φ16	110		Φ25
		Φ20	120		Φ32



## 车刀系列 Tool series

外圆车刀系列			内孔车刀系列		
刀具名称	刀具型号	单价(元)	刀具名称	刀具型号	单价(元)
复合压紧外圆车刀	M...R/L1616	138	复合压紧内孔车刀	S16Q-M...R/L	160
复合压紧外圆车刀	M...R/L2020	153	复合压紧内孔车刀	S20R-M...R/L	170
复合压紧外圆车刀	M...R/L2525	165	复合压紧内孔车刀	S25S-M...R/L	185
复合压紧外圆车刀	M...R/L3232	220	复合压紧内孔车刀	S32T-M...R/L	285
复合压紧外圆车刀	M...R/L4040	340	复合压紧内孔车刀	S40T-M...R/L	420
外圆复合W型	W...R/L2020	170	螺钉压紧内孔车刀	S08K-S...R/L	100
外圆复合W型	W...R/L2525	182	螺钉压紧内孔车刀	S10K-S...R/L	105
螺钉压紧外圆车刀	S...R/L0808	105	螺钉压紧内孔车刀	S12M-S...R/L	110
螺钉压紧外圆车刀	S...R/L1010	105	螺钉压紧内孔车刀	S16Q-S...R/L	120
螺钉压紧外圆车刀	S...R/L1212	105	螺钉压紧内孔车刀	S20R-S...R/L	135
螺钉压紧外圆车刀	S...R/L1616	110	螺钉压紧内孔车刀	S25S-S...R/L	155
螺钉压紧外圆车刀	S...R/L2020	120	螺钉压紧内孔车刀	S32T-S...R/L	230
螺钉压紧外圆车刀	S...R/L2525	138	螺钉压紧内孔车刀	S40T-S...R/L	350
螺钉压紧外圆车刀	S...R/L3232	180	螺钉压紧小孔车刀	S0806H-S...R/L06	155
外圆切槽刀(双刃)	ZQS1616R/L	156	螺钉压紧小孔车刀	S1006K-S...R/L06	155
外圆切槽刀(双刃)	ZQS2020R/L	172	螺钉压紧小孔车刀	S1207K-S...R/L06	155
外圆切槽刀(双刃)	ZQS2525R/L	210	螺钉压紧小孔车刀	S1607M-S...R/L06	165
外圆切槽刀(双刃)	ZQS3232R/L	228	螺钉压紧内孔车刀	SC...R/L S20	180
端面切槽刀(单刃)	Z*2020R/L	350	螺钉压紧内孔车刀	SC...R/L S25	220
端面切槽刀(单刃)	Z*2525R/L	380	内孔切槽刀	GRI.R/L.S20	165
外圆切槽刀(单刃)	ZQ1616R/L	149	内孔切槽刀	GRI.R/L.S25	170
外圆切槽刀(单刃)	ZQ2020R/L	163	内孔切槽刀	GRI.R/L.S32	180
外圆切槽刀(单刃)	ZQ2525R/L	204	内孔切槽刀	GRV.R/L.S20.13	165
外圆切槽刀(单刃)	ZQ3232R/L	224	内孔切槽刀	GRV.R/L.S20.16	165
外圆切槽刀(浅槽)	GRE.R/L1010	135	内孔切槽刀	GRV.R/L.S20.20	170
外圆切槽刀(浅槽)	GRE.R/L1212	135	内螺纹车刀	SNR/L0010M11	130
外圆切槽刀(浅槽)	GRE.R/L1616	140	内螺纹车刀	SNR/L0012M11	130
外圆切槽刀(浅槽)	GRE.R/L2020	165	内螺纹车刀	SNR/L0013M16	140
外圆切槽刀(浅槽)	GRE.R/L2525	165	内螺纹车刀	SNR/L0016Q16	140
外螺纹车刀	SER/L1212H16	138	内螺纹车刀	SNR/L0020R16	155
外螺纹车刀	SER/L1616H16	138	内螺纹车刀	SNR/L0025S16	190
外螺纹车刀	SER/L2020K16	150	内螺纹车刀	SNR/L0032T16	285
外螺纹车刀	SER/L2525M16	165	内螺纹车刀	SNR/L0040T16	420
外螺纹车刀	SER/L3232P16	205	内孔切槽刀(双刃)	C20R-Z*R/L	205
外螺纹车刀	SER/L2020K22	175	内孔切槽刀(双刃)	C25S-Z*R/L	225
外螺纹车刀	SER/L2525M22	180	内孔切槽刀(双刃)	C32T-Z*R/L	300
外螺纹车刀	SER/L3232P22	225	内孔切槽刀(双刃)	C40T-Z*R/L	400

## 钨钢合金抗震铣刀杆 Tungsten alloy rod cutter seismic



- ★ 采用抗震特种工具钢材料。  
Special tool steel material.
- ★ 高精度、高品质。  
High precision and high quality.

抗震刀杆					
刀杆规格	单价(元)	刀杆规格	单价(元)	刀杆规格	单价(元)
MFT08-08-100-M4	290	MFT17-16-150-M8	850	MFT25-24-250-M12	2720
MFT10-10-080-M5	322	MFT17-16-200-M8	1090	MFT25-24-300-M12	3300
MFT10-10-100-M5	340	MFT17-16-250-M8	1360	MFT26-25-150-M12	1840
MFT10-10-150-M5	450	MFT17-16-300-M8	1630	MFT26-25-200-M12	2350
MFT12-12-100-M6	435	MFT20-19-150-M10	1230	MFT26-25-250-M12	2910
MFT12-12-150-M6	570	MFT20-19-200-M10	1610	MFT26-25-300-M12	3515
MFT12-12-200-M6	720	MFT20-19-250-M10	1950	MFT35-32-150-M16	2940
MFT16-15-100-M8	580	MFT21-20-100-M10	910	MFT35-32-200-M16	3530
MFT16-15-150-M8	785	MFT21-20-150-M10	1270	MFT35-32-250-M16	4620
MFT16-15-200-M8	988	MFT21-20-200-M10	1630	MFT35-32-300-M16	5460
MFT16-15.6-150-M8	840	MFT21-20-250-M10	1980	MFT35-32-350-M16	6880
MFT16-15.6-200-M8	1085	MFT21-20-300-M10	2310	MFT35-32-400-M16	7870
MFT16-15.6-250-M8	1380	MFT25-24-150-M12	1730		
MFT17-16-100-M8	650	MFT25-24-200-M12	2180		

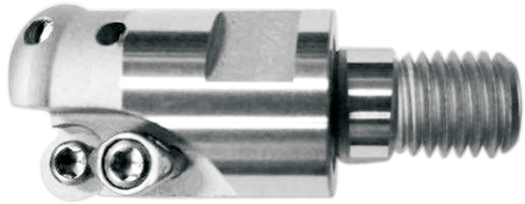
## ST抗震镗刀 ST seismic boring



ST抗震镗刀杆			SC抗震镗刀杆		
刀杆规格	单价(元)	适配镗头	刀杆规格	单价(元)	适配镗头
ST08-M5-100L	440	DEB09,	SC19-LBK1-150L	1560	WBH20-36
ST10-M6(M5)-80L	290	DEB10.5	SC19-LBK1-200L	2000	
ST10-M6(M5)-100L	510	DEB12(DEB10.5)	SC19-LBK1-250L	2400	WBH25-47
ST10-M6(M5)-150L	620		SC24-LBK2-200L	2800	
ST12-M6-100L	520	DEB14, DEB16	SC24-LBK2-250L	3400	WBH32-60
ST12-M6-150L	760		SC24-LBK2-300L	4000	
ST12-M6-200L	1060		SC32-LBK3-200L	4140	
ST14-M10-150L	960	DEB16,DEB18,DEB20, DEB22,DEB24,DEB26	SC32-LBK3-250L	5340	WBH32-60
ST14-M10-200L	1280		SC32-LBK3-300L	6300	
ST16-M10-100L	900	DEB16,DEB18,DEB20, DEB22,DEB24,DEB26	SC32-LBK3-350L	8120	WBH32-60
ST16-M10-150L	1040		SC32-LBK3-400L	9280	
ST16-M10-200L	1380				
ST16-M10-250L	1740				



## 抗震刀杆刀头 Seismic tool rod head



型号 Cat.No	单价 (元)	适用刀片
BAP3-16-2T-M08	180	AP-1135
BMP3-17-2T-M08	180	
BAP3-20-2T-M10	200	
BAP3-21-2T-M10	200	
BAP3-25-3T-M12	250	
BAP3-26-3T-M12	250	
BAP3-26-4T-M12	310	
BAP4-25-2T-M12	220	AP-1604
BAP4-26-2T-M12	220	
BAP4-35-3T-M16	300	
R390-16-2T-M8	220	R390-11T3
R390-17-2T-M8	220	
R390-20-2T-M10	220	
R390-21-2T-M12	220	
R390-25-2T-M12	280	
R390-26-2T-M12	280	
R390-25-3T-M12	380	
R390-26-3T-M12	380	
PPH-12-M16	300	RD-0502
PPH-16-M8	300	
PPH-20-M10	330	
PPH-25-M12	350	
PPH-30-M16	400	
RD0501-11-2T-M5	250	
RD0501-13-2T-M6	250	
RD0702-11-2T-M5	250	RD-0702
RD0702-13-2T-M6	250	
RD0702-16-2T-M8	180	
RD0702-17-2T-M8	180	
RD0702-20-2T-M10	200	
RD0702-21-2T-M10	200	
RD0702-25-4T-M12	250	
RD0702-26-4T-M12	250	
RD0802-16-2T-M8	180	RD-0802
RD0802-17-2T-M8	180	
RD0802-20-2T-M10	200	
RD0802-21-2T-M10	200	
RP1003-25-2T-M12	220	RP-1003
RP1003-26-2T-M12	220	
RP1003-35-3T-M16	300	
RP10T3-25-2T-M12	220	RD-10T3
RP10T3-26-2T-M12	220	
RP10T3-35-3T-M16	300	
RD1204-32-2T-M16	260	RD-1204
RD1204-33-2T-M16	260	

## NBH2084微调精密镗孔刀头 NBH2084 Micro boring head



型号 Cat.No	单价 (元)	适用刀片 Applicable inserts
NBH2084S	2000	
NBJ16精镗头	2000	

## NBJ-20微调精镗刀杆 NBJ-20 Micro boring bar



型号 Cat.No	单价 (元)	刀片型号 inserts
NBJ1608-32	160	TB**0601
NBJ1610-40L	160	TB**0601
NBJ1612-53	160	TP.0902
NBJ1620-83	160	TP.1103
NBJ1625-90	160	TP.1103
NBJ1630-90	160	TP.1103
NBJ1640-90	160	TP.1103
NBJ2008-32	160	TP.0601
NBJ2010-40	160	TP.0601
NBJ2012-53	160	TP.0902
NBJ2016-68	160	TP.0902
NBJ2020-83	160	TP.1103
NBJ2025-96	160	TP.1103
NBJ2030-115	160	TP.1103
NBJ20L20-100	160	TP.1103
NBJ2020-150	340	TP.1103
NBJ2025-150	340	TP.1103
NBJ2030-150	340	TP.1103
NBJ2020-200	400	TP.1103
NBJ2025-200	400	TP.1103
NBJ2030-200	400	TP.1103

## NBH2084微调精镗套装组合 NBH2084 Micro boring set

(八支套装) NBJ-20-8PCS	型号 Cat.No	
	DBJ-2008-32	DBJ-2020-83
DBJ-2010-40	DBJ-2025-96	
DBJ-2012-53	DBJ-2030-115	
DBJ-2016-68	DBJ-20120-L	

型号 Cat.No	单价 (元)	镗孔范围 Boring range	内附零件 Fittings
BT30-SBJ16-8P套装	3500	8-280	1.NBH2084-A刀柄一把 One NBJ-16-A shank 2.NBH2084精密镗头一支 One micro boring head 3.DBJ-20精密刀杆八支 Eight micro boring bar 4.新型扳手三支 Three New wrench
BT40-SBJ16-8P套装	3500	8-280	
BT30-NBH2084-8P	3500	8-280	
BT40-NBH2084-8P	3500	8-280	
BT45-NBH2084-8P	3700	8-280	



型号 Cat.No	单价 (元)
BT40-SBJ16刀柄	400
BT50-SBJ16刀柄	640
BT40-2084刀柄	440
BT50-2084刀柄	720
BT40-2084-150	720
BT50-2084-150	960
BT50-2084-200	1060
BT50-2084-250	1180
BT50-2084-300	1300

型号 Cat.No	单价 (元)
BT40-2084连接盘	240
BT50-2084连接盘	240

## CBH大径微调精密镗头 CBH large diameter fine-tuning precision boring head



型号 Cat.No	单价 (元)
CBH20-36	2400
CBH25-33	2400
CBH32-42	2600
CBH40-55	2900
CBH53-75	3200
CBH68-102	3600
CBH100-152	3900
CBH150-202	4200
CBH200-310	6400
CBH300-410	7700
CBH400-510	8600
CBH500-610	9700
CBH600-710	10800
CBH700-810	12300
CBH800-910	16000
CBH900-1100铝体	18000
CBH1100-1200铝体	20000



### DBH大径双刃粗镗头 DBH Large diameter modular rough boring



型号 Cat.No	单价 (元)	型号 Cat.No	单价 (元)
RBH19-25	520	RBH300-400	4000
RBH25-33	640	RBH400-500	5000
RBH32-42	720	RBH500-600	7000
RBH40-55	840	RBH600-710	8000
RBH52-70	1000	RBH700-810	9000
RBH68-92	1240	RBH800-910	10000
RBH90-122	1500	RBH900-1000	11000
RBH120-164	1840	RBH1000-1100铝体	12000
RBH160-204	2060	RBH1100-1200铝体	13000
RBH200-300	3000	RBH1200-1300铝体	14000

### 粗镗刀柄 Rough boring the handle



型号 Cat.No	单价 (元)	型号 Cat.No	单价 (元)
BT30-LBK1-70	300	BT50-LBK2-145	580
BT30-LBK2-80	300	BT50-LBK3-125	560
BT30-LBK3-80	310	BT50-LBK3-155	720
BT30-LBK4-70	310	BT50-LBK4-115	520
BT30-LBK5-60	320	BT50-LBK4-145	580
BT30-LBK6-60	320	BT50-LBK4-175	720
BT40-LBK1-75	300	BT50-LBK4-205	780
BT40-LBK1-105	320	BT50-LBK5-105	560
BT40-LBK2-85	300	BT50-LBK5-180	720
BT40-LBK2-115	320	BT50-LBK5-240	860
BT40-LBK3-95	320	BT50-LBK5-300	920
BT40-LBK3-125	360	BT50-LBK6-95	560
BT40-LBK3-155	360	BT50-LBK6-170	700
BT40-LBK4-85	320	BT50-LBK6-230	860
BT40-LBK4-130	360	BT50-LBK6-290	920
BT40-LBK4-175	400	BT50-LBK6-300	920
BT40-LBK5-75	320	BT50-LBK6-350	1020
BT40-LBK5-125	360	BT50-LBK6-400	1120
BT40-LBK5-175	400	BT50-LBK6-450	1220
BT40-LBK6-65	320	BT50-LBK6-500	1360
BT40-LBK6-115	360	BT40-BST-100	600
BT40-LBK6-165	400	BT50-BST-100	660
BT50-LBK1-115	560	BT50-BST-150	760
BT50-LBK1-145	580	BT50-BST-200	860
BT50-LBK2-110	560	BT50-BST-250	980

### BSA45度粗镗孔刀柄 BSA 45° Roughing boring bar



型号 Cat.No	单价 (元)
BT40-BSA25-120	320
BT40-BSA25-150	320
BT40-BSA30-150	320
BT40-BSA38-165	360
BT40-BSA42-165	360
BT40-BSA50-165	380
BT40-BSA50-220	520
BT40-BSA62-180	400
BT40-BSA62-220	520
BT40-BSA72-180	420
BT40-BSA72-220	520
BT40-BSA90-180	500
BT40-BSA90-240	600
BT50-BSA25-135	560
BT50-BSA25-150	560
BT50-BSA30-165	560
BT50-BSA38-180	660
BT50-BSA42-180	660
BT50-BSA42-210	720
BT50-BSA50-180	660
BT50-BSA50-220	720
BT50-BSA50-240	760
BT50-BSA62-195	680
BT50-BSA62-270	840
BT50-BSA72-195	680
BT50-BSA72-285	840
BT50-BSA90-210	760
BT50-BSA90-300	920
BT50-BSA105-195	860
BT50-BSA105-285	960
BT50-BSA130-255	1080

### BSB90度粗镗孔刀柄 BSA 90° Roughing boring bar



型号 Cat.No	单价 (元)
BT40-BSB25-120	320
BT40-BSB25-150	320
BT40-BSB30-150	320
BT40-BSB38-165	360
BT40-BSB42-165	360
BT40-BSB50-165	380
BT40-BSB50-220	520
BT40-BSB62-180	400
BT40-BSB62-220	520
BT40-BSB72-180	420
BT40-BSB72-220	520
BT40-BSB90-180	500
BT40-BSB90-240	600
BT50-BSB25-135	560
BT50-BSB25-150	560
BT50-BSB30-165	560
BT50-BSB38-180	660
BT50-BSB42-180	660
BT50-BSB42-210	720
BT50-BSB50-180	660
BT50-BSB50-220	720
BT50-BSB50-240	760
BT50-BSB62-195	680
BT50-BSB62-270	840
BT50-BSB72-195	680
BT50-BSB72-285	840
BT50-BSB90-210	760
BT50-BSB90-300	920
BT50-BSB105-195	860
BT50-BSB105-285	960
BT50-BSB130-255	1080



## TBS舍弃式镗孔刀杆 TBS Hole boring throw-away cutting tools



T90度刀杆适用于BSB刀柄Fit for bsb boring bar

型号 Cat.No	单价 (元)	刀片型号 inserts
TBS 908-23	50	TCMT06
TBS 910-36	56	TCMT09
TBS 910-45	56	
TBS 913-48	60	TCMT11
TBS 913-65	60	
TBS 916-60	70	
TBS 916-80	70	
TBS 919-70	90	TCMT16
TBS 919-90	90	
TBS 919-105	90	
TBS 925-100	100	
TBS 919-135	100	

T45度刀杆适用于BSA刀柄Fit for bsa boring bar

型号 Cat.No	单价 (元)	刀片型号 inserts
TBS 408-23	50	TCMT06
TBS 410-36	56	TCMT09
TBS 410-45	56	
TBS 413-48	60	TCMT11
TBS 413-65	60	
TBS 416-60	70	
TBS 416-80	70	
TBS 419-70	90	TCMT16
TBS 419-90	90	
TBS 419-105	90	
TBS 425-100	100	
TBS 419-135	100	

R为右手刀背镗专用

## CBS舍弃式镗孔刀杆 CBS Hole boring throw-away cutting tools



C90度刀杆适用于BSB刀柄Fit for bsb boring bar

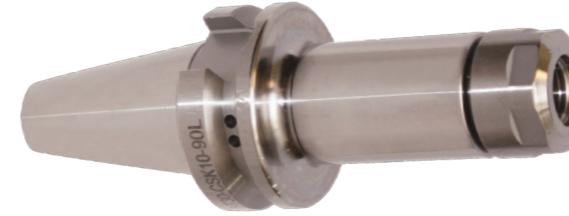
型号 Cat.No	单价 (元)	刀片型号 inserts
CBS 908-23	50	CC..0602
CBS 910-36	56	CC..0602
CBS 910-45	56	CC..0602
CBS 913-48	60	CC..09T3
CBS 913-65	60	CC..09T3
CBS 916-60	70	CC..09T3
CBS 916-80	70	CC..09T3
CBS 919-70	90	CC..1204
CBS 919-90	90	CC..1204
CBS 919-105	90	CC..1204
CBS 925-100	100	CC..1204
CBS 919-135	100	CC..1204

C45度刀杆适用于BSA刀柄Fit for bsa boring bar

型号 Cat.No	单价 (元)	刀片型号 inserts
CBS 408-23	50	CC..0602
CBS 410-36	56	CC..0602
CBS 410-45	56	CC..0602
CBS 413-48	60	CC..09T3
CBS 413-65	60	CC..09T3
CBS 416-60	70	CC..09T3
CBS 416-80	70	CC..09T3
CBS 419-70	90	CC..1204
CBS 419-90	90	CC..1204
CBS 419-105	90	CC..1204
CBS 425-100	100	CC..1204
CBS 419-135	100	CC..1204

R为右手刀背镗专用

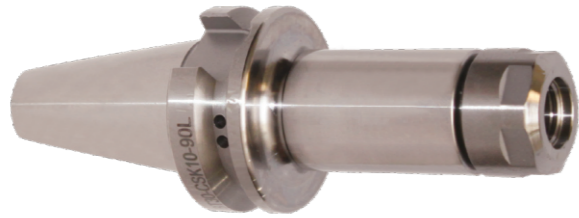
## BT/JT/NT/XT- ER-A.M型刀柄



型号 Cat.No	单价 (元)	型号 Cat.No	单价 (元)
BT30-ER11-70L	150	BT40-ER40-150L	240
BT30-ER11-100L	160	BT50-ER16-70L	360
BT30-ER16-70L	150	BT50-ER16-100L	360
BT30-ER16-100L	160	BT50-ER16-150L	460
BT30-ER20-70L	150	BT50-ER16-200L	560
BT30-ER20-100L	160	BT50-ER20-70L	360
BT30-ER25-70L	150	BT50-ER20-100L	360
BT30-ER25-100L	160	BT50-ER20-150L	460
BT30-ER32-70L	150	BT50-ER20-200L	560
BT30-ER32-100L	160	BT50-ER20-250L	640
BT30-ER40-80L	160	BT50-ER25-70L	360
BT30-ER40-100L	170	BT50-ER25-100L	360
BT40-ER11-70L	150	BT50-ER25-150L	460
BT40-ER11-100L	160	BT50-ER25-200L	560
BT40-ER11-150L	240	BT50-ER25-250L	640
BT40-ER16-70L	150	BT50-ER25-300L	820
BT40-ER16-100L	160	BT50-ER25-350L	1020
BT40-ER16-150L	240	BT50-ER32-80L	370
BT40-ER16-200L	400	BT50-ER32-100L	370
BT40-ER20-70L	150	BT50-ER32-150L	460
BT40-ER20-100L	160	BT50-ER32-200L	570
BT40-ER20-150L	240	BT50-ER32-250L	650
BT40-ER20-200L	400	BT50-ER32-300L	830
BT40-ER25-70L	150	BT50-ER32-350L	1030
BT40-ER25-100L	150	BT50-ER32-400L	1270
BT40-ER25-150L	240	BT50-ER40-80L	380
BT40-ER25-200L	400	BT50-ER40-100L	380
BT40-ER25-250L	520	BT50-ER40-150L	460
BT40-ER32-70L	150	BT50-ER40-200L	580
BT40-ER32-100L	150	BT50-ER40-250L	660
BT40-ER32-150L	240	BT50-ER40-300L	840
BT40-ER32-200L	400	BT50-ER40-350L	1040
BT40-ER32-250L	520	BT50-ER40-400L	1280
BT40-ER40-80L	160	BT50-ER50-100	520
BT40-ER40-100L	160	BT50-ER50-150	560
		BT50-ER50-200	660



### BT/JT/NT/XT- ER-A 型刀柄



型号 Cat.No	单价 (元)	型号 Cat.No	单价 (元)
BT30-ER11-70L	150	BT40-ER11-100L	150
BT30-ER11-100L	150	BT40-ER11-150L	240
BT30-ER11-150L	240	BT40-ER16-70L	150
BT30-ER16-70L	150	BT40-ER16-100L	150
BT30-ER16-100L	150	BT40-ER16-150L	240
BT30-ER16-150L	240	BT40-ER16-200L	400
BT30-ER20-70L	150	BT40-ER20-70L	150
BT30-ER20-100L	150	BT40-ER20-100L	150
BT30-ER20-150L	150	BT40-ER20-150L	240
BT40-ER11-70L	150	BT40-ER20-200L	400

### BT/JT/NT-ER-M UM 铣刀柄



型号 Cat.No	单价 (元)	型号 Cat.No	单价 (元)
BT30-ER11-70L	150	BT30-ER32-70L	160
BT30-ER11-100L	150	BT30-ER32-100L	160
BT30-ER11-150L	240	BT30-ER32-150L	240
BT30-ER16-70L	150	BT30-ER40-80L	160
BT30-ER16-100L	150	BT30-ER40-100L	160
BT30-ER16-150L	240	BT40-ER11-70L	150
BT30-ER20-70L	150	BT40-ER11-100L	150
BT30-ER20-100L	150	BT40-ER11-150L	240
BT30-ER20-150L	150	BT40-ER16-70L	150
BT30-ER25-70L	150	BT40-ER16-100L	150
BT30-ER25-100L	150	BT40-ER16-150L	240
BT30-ER25-150L	240	BT40-ER16-200L	400
BT30-ER32-70L	150	BT40-ER20-70L	150

### BT/JT/NT-ER-M UM 铣刀柄



型号 Cat.No	单价 (元)	型号 Cat.No	单价 (元)
BT40-ER20-100L	150	BT50-ER25-100L	360
BT40-ER20-150L	240	BT50-ER25-150L	460
BT40-ER20-200L	400	BT50-ER25-200L	560
BT40-ER25-60L	150	BT50-ER25-250L	640
BT40-ER25-100L	150	BT50-ER25-300L	820
BT40-ER25-150L	240	BT50-ER25-350L	1020
BT40-ER25-200L	400	BT50-ER32-80L	370
BT40-ER25-250L	520	BT50-ER32-100L	370
BT40-ER32-70L	150	BT50-ER32-150L	460
BT40-ER32-100L	150	BT50-ER32-200L	570
BT40-ER32-150L	240	BT50-ER32-250L	650
BT40-ER32-200L	400	BT50-ER32-300L	830
BT40-ER32-250L	520	BT50-ER32-350L	1030
BT40-ER40-80L	160	BT50-ER32-400L	1270
BT40-ER40-100L	160	BT50-ER40-80L	380
BT40-ER40-150L	240	BT50-ER40-100L	380
BT50-ER16-70L	360	BT50-ER40-150L	460
BT50-ER16-100L	360	BT50-ER40-200L	580
BT50-ER16-150L	460	BT50-ER40-250L	660
BT50-ER16-200L	560	BT50-ER40-300L	840
BT50-ER20-70L	360	BT50-ER40-350L	1040
BT50-ER20-100L	360	BT50-ER40-400L	1280
BT50-ER20-150L	460	BT50-ER50-100	520
BT50-ER20-200L	560	BT50-ER50-150	580
BT50-ER20-250L	640	BT50-ER50-200	660
BT50-ER25-70L	360		





### BT/JT-C 强力型铣刀柄 BT/JT-C Multi lock milling chuck



型号 Cat.No	单价 (元)	型号 Cat.No	单价 (元)
MT-C25-85	600	BT50-C25-100	1000
BT30-C20-80	560	BT50-C25-150	1200
BT30-C25-85	560	BT50-C32-105	1000
BT30-C32-90	560	BT50-C32-110	1000
BT40-C20-90	600	BT50-C32-135	1100
BT40-C20-135	700	BT50-C32-150	1200
BT40-C22-95	600	BT50-C32-165	1300
BT40-C25-95	600	BT50-C32-200	1560
BT40-C25-135	700	BT50-C32-250	1900
BT40-C32-105	600	BT50-C32-300	2560
BT40-C32-110	600	BT50-C32-350	3040
BT40-C32-135	700	BT50-C32-400	3680
BT40-C32-150	760	BT50-C32-450	4700
BT40-C32-165	800	BT50-C32-500	5600
BT40-C32-200	1100	BT50-C42-135	1200
BT40-C32-250	1400	BT50-C42-165	1400
BT50-C20-100	1000	BT40-C32-90	1600
BT50-C20-150	1200	BT50-C32-110	2200

### BT/NT/JT-APU 台体式钻夹头 BT/JT-APU Integrated keyless drill chuck

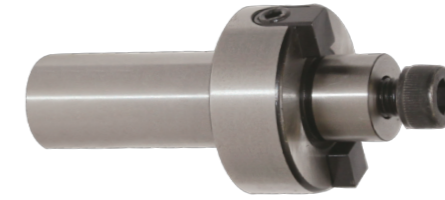


型号 Cat.No	单价 (元)	型号 Cat.No	单价 (元)
BT30-APU8-80	380	BT50-APU16-130	640
BT30-APU13-100	380	BT50-APU16-180	780
BT30-APU16-100	400	BT30-APU08柄	150
BT40-APU8-100	380	BT30-APU13柄	150
BT40-APU13-100	380	BT30-APU16柄	150
BT40-APU16-100	400	BT40-APU13柄	150
BT50-APU8-100	600	BT40-APU16柄	150
BT50-APU13-100	600	BT50-APU13柄	360
BT50-APU13-180	760	BT50-APU16柄	360

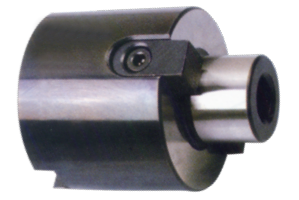
### BT/JT-FMB 普通平面铣刀柄(公制轴芯) BT/JT-FMB Face mill arbor(Metric)



160元



160元



型号 Cat.No	单价 (元)	型号 Cat.No	单价 (元)	型号 Cat.No	单价 (元)
BT30-FMB16-60	200	BT40-FMB40-60	180	BT50-FMB27-300	740
BT30-FMB16-100	200	BT40-FMB40-100	180	BT50-FMB27-350	840
BT30-FMB22-45	170	BT40-FMB40-150	240	BT50-FMB27-400	940
BT30-FMB22-60	170	BT40-FMB60-75	700	BT50-FMB27-450	1040
BT30-FMB22-100	170	BT50-FMB16-60	400	BT50-FMB27-500	1160
BT30-FMB27-45	170	BT50-FMB16-100	400	BT50-FMB32-60	370
BT30-FMB27-60	170	BT50-FMB16-150	460	BT50-FMB32-100	370
BT30-FMB27-100	170	BT50-FMB16-200	560	BT50-FMB32-150	470
BT30-FMB32-45	170	BT50-FMB22-45	360	BT50-FMB32-200	560
BT30-FMB32-60	180	BT50-FMB22-60	360	BT50-FMB32-250	650
BT30-FMB32-100	180	BT50-FMB22-100	360	BT50-FMB32-300	750
BT30-FMB40-60	180	BT50-FMB22-150	460	BT50-FMB32-350	850
BT30-FMB40-100	180	BT50-FMB22-200	560	BT50-FMB32-400	950
BT40-FMB16-60	200	BT50-FMB22-250	640	BT50-FMB32-450	1050
BT40-FMB16-100	200	BT50-FMB22-300	740	BT50-FMB32-500	1260
BT40-FMB16-120	240	BT50-FMB22-350	840	BT50-FMB40-60	370
BT40-FMB16-150	240	BT50-FMB22-400	940	BT50-FMB40-100	370
BT40-FMB16-200	360	BT50-FMB22-450	1140	BT50-FMB40-150	470
BT40-FMB22-45	170	BT50-FMB22-500	1260	BT50-FMB40-200	560
BT40-FMB22-60	170	BT50-FMB22-550	1360	BT50-FMB40-250	650
BT40-FMB22-100	170	BT50-FMB22-600	1560	BT50-FMB40-300	750
BT40-FMB22-120	240	BT50-FMB22-650	1680	BT50-FMB40-350	850
BT40-FMB22-150	240	BT50-FMB22-700	1820	BT50-FMB40-400	950
BT40-FMB22-200	340	BT50-FMB22-750	1940	BT50-FMB40-450	1050
BT40-FMB22-250	440	BT50-FMB22-800	2060	BT50-FMB40-500	1260
BT40-FMB22-300	560	BT50-FMB22-850	2180	BT60-FMB60-75	700
BT40-FMB22-350	660	BT50-FMB22-900	2300		
BT40-FMB22-400	760	BT50-FMB22-950	2640		
BT40-FMB27-45	170	BT50-FMB22-1000	2800		
BT40-FMB27-60	170	BT50-FMB22-1100	3000		
BT40-FMB27-100	170	BT50-FMB22-1200	3200		
BT40-FMB27-150	240	BT50-FMB27-60	360		
BT40-FMB32-45	180	BT50-FMB27-100	360		
BT40-FMB32-60	180	BT50-FMB27-150	460		
BT40-FMB32-100	180	BT50-FMB27-200	560		
BT40-FMB32-150	240	BT50-FMB27-250	640		

非标刀柄可订做  
刀柄可做到一米二长



### BT/JT/NT-SLA SLN侧固式刀柄



型号 Cat.No	单价 (元)
BT30-SLA20-75	150
BT30-SLA25-75	150
BT30-SLA32-90	150
BT40-SLA6-75	150
BT40-SLA8-75	150
BT40-SLA10-75	150
BT40-SLA12-75	150
BT40-SLA16-75	150
BT40-SLA20-75	150
BT40-SLA25-75	150
BT40-SLA20-90	150
BT40-SLA25-90	150
BT40-SLA16-100	150
BT40-SLA20-100	150
BT40-SLA24-100	150
BT40-SLA25-100	150
BT40-SLA32-100	150
BT40-SLA40-105	190
BT40-SLA42-105	200
BT50-SLA16-100	360
BT50-SLA20-100	360
BT50-SLA20-150	460
BT50-SLA25-100	360
BT50-SLA25.4-100	400
BT50-SLA25-150	460
BT50-SLA25-200	560
BT50-SLA25-250	660
BT50-SLA25-300	760
BT50-SLA32-100	360
BT50-SLA32-150	460
BT50-SLA32-200	560
BT50-SLA32-250	660
BT50-SLA32-300	760
BT50-SLA40-100	360
BT50-SLA40-150	560
BT50-SLA42-100	400
BT50-SLA42-120	460
BT50-SLA50-120	460

### BT/JT/NT 莫氏钻刀柄 BT/JT/NT Morse taper adapter A type



用于扁尾莫氏钻头

型号 Cat.No	单价 (元)
BT30-MTA1-45	150
BT30-MTA1-100	150
BT30-MTA2-60	150
BT30-MTA2-120	240
BT30-MTA3-80	150
BT30-MTA3-150	240
BT40-MTA1-45	150
BT40-MTA1-120	150
BT40-MTA2-50	150
BT40-MTA2-60	150
BT40-MTA2-135	240
BT40-MTA3-60	150
BT40-MTA3-70	150
BT40-MTA3-75	150
BT40-MTA3-150	240
BT40-MTA4-75	150
BT40-MTA4-90	150
BT40-MTA4-95	150
BT40-MTA4-180	320
BT50-MTA1-50	360
BT50-MTA1-120	360
BT50-MTA2-50	360
BT50-MTA2-60	360
BT50-MTA2-135	460
BT50-MTA3-65	360
BT50-MTA3-75	360
BT50-MTA3-150	460
BT50-MTA4-70	360
BT50-MTA4-90	360
BT50-MTA4-95	360
BT50-MTA4-180	520
BT50-MTA5-105	400
BT50-MTA5-210	560

### BT/JT/NT 后拉式数控莫氏刀柄 MTB



用于螺钉锁紧式莫氏柄刀具

型号 Cat.No	单价 (元)
BT30-MTB1-45	150
BT30-MTB2-60	150
BT30-MTB3-70	150
BT40-MTB1-45	150
BT40-MTB1-120	240
BT40-MTB2-45	150
BT40-MTB2-135	240
BT40-MTB3-50	150
BT40-MTB3-60	150
BT40-MTB3-75	150
BT40-MTB3-150	240
BT40-MTB4-70	150
BT40-MTB4-90	150
BT40-MTB4-95	150
BT40-MTB4-180	320
BT50-MTB1-60	360
BT50-MTB2-45	360
BT50-MTB2-135	460
BT50-MTB3-45	360
BT50-MTB3-60	360
BT50-MTB3-75	360
BT50-MTB3-150	460
BT50-MTB4-75	360
BT50-MTB4-90	360
BT50-MTB4-95	360
BT50-MTB4-180	520
BT50-MTB5-110	400
BT50-MTB5-210	560

### BT/SCA侧铣刀柄



型号 Cat.No	单价 (元)
BT40-SCA16-60	360
BT40-SCA22-70	360
BT40-SCA22-90	360
BT40-SCA22-120	400
BT40-SCA27-75	360
BT40-SCA27-90	360
BT40-SCA27-120	400
BT40-SCA32-90	360
BT40-SCA32-120	400
BT40-SCA40-90	360
BT40-SCA40-120	400
BT40-SCA40-150	460
BT40-SCA22.22-90	400
BT40-SCA22.22-120	460
BT40-SCA25.4-90	400
BT40-SCA25.4-120	460
BT40-SCA31.75-90	400
BT50-SCA22-90	600
BT50-SCA22-135	660
BT50-SCA27-95	600
BT50-SCA27-135	660
BT50-SCA32-90	600
BT50-SCA32-135	660
BT50-SCA40-90	600
BT50-SCA40-150	660
BT50-SCA25.4-90	720
BT50-SCA25.4-135	800
BT50-SCA31.75-90	720
BT50-SCA31.75-135	800
BT50-SCA38.1-90	720
BT50-SCA38.1-135	800



## 攻丝刀柄 Tapping the handle



产品名称	型号	规格	价格	
攻丝夹头 (国标)	GT12	M3 M4 M5 M6 M8 M10 M12	140	
攻丝夹头 (国标)	GT24	M5M6M8M10M12 M14M16	240	
攻丝夹头 (国标)	GT24	M18M20 M22M24M27M30	240	
攻丝夹头 (国标)	GT42	M24M27M30M33 36M39M42	560	
伸缩式柄体	BT40	GT12	600	
	BT40	GT24	640	
	BT50	GT12	1100	
	BT50	GT24	1200	
	MT3	GT12	540	
	MT3	GT24	580	
	MT4	GT12	580	
	MT4	GT24	660	
	MT5	GT12	700	
	MT5	GT24	760	
	攻丝夹头套装	7支	GT12	900
		7支	GT24	760
	攻丝夹头 日标·英标等非标	GT12	M3 M4 M5 M6 M8 M10 M12	200
	攻丝夹头 日标·英标等非标	GT24	M5M6M8M10M12 M14M16	300
攻丝夹头 日标·英标等非标	GT24	M18M20 M22M24M27M30	600	
攻丝夹头 日标·英标等非标	GT42	M24M27M30M33 36M39M42	600	
套装系列	BT40	GT12 (7支装)	1800	
	BT40	GT24 (7支装)	2320	
	BT50	GT12 (7支装)	2320	
	BT50	GT24 (7支装)	2700	
	MT3	GT12 (7支装)	1640	
	MT3	GT24 (7支装)	2360	
	MT4	GT12 (7支装)	1700	
	MT4	GT24 (7支装)	2300	
	MT5	GT12 (7支装)	1840	
	MT5	GT24 (7支装)	2500	

## MT-APU莫氏 MT - the APU Morse



型号 Cat.No	单价 (元)	莫氏#
MT2-APU8	360	360
MT2-APU13	360	360
MT3-APU13	360	360
MT3-APU16	370	370
MT4-APU13	360	360
MT4-APU16	370	370

配套件含扳手Standard fitting contains spanner

## C-APU直柄 C - the APU straight shank



型号 Cat.No	单价 (元)
C20-APU8	360
C20-APU13	360
C20-APU16	370
C25-APU13	360
C25-APU16	370
C32-APU13	360
C32-APU16	370

配套件含扳手Standard fitting contains spanner

## 莫氏ER延长杆 Morse ER extension rod

型号 Cat.No	单价 (元)	莫氏#	型号	单价	莫氏#
MTA2-ER16	150	2#	MTB2-ER20	150	2#
MTA2-ER20	150	2#	MTB2-ER25	150	2#
MTA2-ER25	150	2#	MTB3-ER25	160	3#
MTA2-ER32	160	2#	MTB3-ER32	150	3#
MTA3-ER25	160	3#	MTB3-ER40	160	3#
MTA3-ER32	150	3#	MTB4-ER25	160	4#
MTA4-ER32	160	4#	MTB4-ER32-M16	160	4#
MTA5-ER32	220	5#	MTB4-ER40-M14	170	4#
MTA5-ER40	240	5#	MTB4-ER40-M16	170	4#
MTA6-ER40-100	320	6#	MTB5-ER40	220	5#

## 小经铣刀延长杆

### Small milling cutter extension rod



型号 Cat.No	单价 (元)
D8-d1/8-100	170
D8/d1/8-150	190
D10-d3-100	170
D10-d4-120	180
D10-d6-100	170
D10-d6-150	190
D12-d3-120	180
D12-d1/8-150	190
D12-d4-120	180

型号 Cat.No	单价 (元)
D12-d5-150	190
D12-d6-120	180
D16-d3-100	190
D16-d3-150	200
D16-d1/8-150	200
D16-d4-150	200
D16-d5-150	200
D16-d6-150	200
D16-d8-150	200
D16-d10-150	200
D20-d6-150	220
D20-d8-150	220
D20-d10-150	220
D20-d12-150	220



**ER延长杆 A型铣削用**  
ER extension rod type A milling



型号 Cat.No	单价 (元)
C8-ER8A-100	100
C10-ER8A-100	100
C10-ER8A-150	100
C12-ER8A-100	100
C12-ER8A-150	100
C10-ER11A-100	100
C12-ER11A-100	100
C12-ER11A-150	100
C16-ER11A-100	90
C16-ER11A-150	100
C20-ER11A-100	90
C20-ER11A-150	100
C16-ER16A-100	90
C16-ER16A-150	100
C16-ER16A-200	130
C20-ER16A-100	90
C20-ER16A-150	100
C20-ER16A-200	130
C20-ER20A-100	90
C20-ER20A-150	100
C20-ER20A-200	130

**Er延长杆 A型铣削用**  
ER extension rod type A milling



型号 Cat.No	单价 (元)
C16B-ER16A-100	90
C20B-ER20A-150	100
C25B-ER20A-100	90

**ER 延长杆(M/UM型)**  
ER Extension(M/UM type)



型号 Cat.No	单价 (元)
C10-ER8M-100	100
C10-ER8M-150	100
C12-ER8M-100	100
C12-ER8M-150	100
C10-ER11M-100	100
C10-ER11M-150	100
C12-ER11M-100	100
C12-ER11M-150	100
C16-ER11M-100	90
C16-ER11M-150	100
C20-ER11M-100	90
C20-ER11M-150	100
C16-ER16M-100	90
C16-ER16M-150	100
C16-ER16M-200	130
C20-ER16M-100	90
C20-ER16M-150	100
C20-ER16M-200	130
C20-ER20M-100	90
C20-ER20M-150	100
C20-ER20M-200	130
C20-ER25M-100	100
C20-ER25M-150	110
C25-ER25M-100	110
C25-ER25M-150	120
C25-ER25M-200	140
C25-ER32M-100	110
C25-ER32M-150	120
C25-ER40M-100	130
C25-ER40M-150	140
C32-ER32M-100	120
C32-ER32M-150	130
C32-ER32M-200	160

**ER 弹性筒夹 ER Spring collet**



全系列标准大批库存  
The full series standard for a large number of inventory

型号 Cat.No	D	L	RANGE	L mm	D mm	普通级	A级	UP级
ER8	9	14	0.5					
ER11	11.5	18	1.0	6	1.0-1.4	0.015		
ER16	17	27.5	1.0	10	1.5-2.9	0.015		
ER20	21	31.5	1.0	16	3.0-5.9	0.015		
ER25	26	34	1.0	25	6.0-9.9	0.015	0.01	5μ
ER32	33	40	1.0	40	10.0-17.9	0.02		
ER40	41	46	1.0	50	18.0-26.9	0.02		
ER50	52	60	1.0					

**ER8**

型号 Cat.No	夹持	单价 (元)
2.0	1.5-2.0	36
2.5	2.0-2.5	36
3.0	2.5-3.0	36
3.5	3.0-3.5	36
4.0	3.5-4.0	36
4.5	4.0-4.5	36
5.0	4.5-5.0	36

**ER11**

型号 Cat.No	夹持	单价 (元)
1.0	0.5-1.0	30
1.5	1.0-1.5	30
2.0	1.5-2.0	30
2.5	2.0-2.5	30
3.0	2.5-3.0	24
3.5	3.0-3.5	24
4.0	3.5-4.0	24
4.5	4.0-4.5	24
5.0	4.5-5.0	24
5.5	5.0-5.5	24
6.0	5.5-6.0	24
6.5	6.0-6.5	24
7.0	6.5-7.0	24

**ER16**

型号 Cat.No	夹持	单价 (元)
1.0	0.5-1.0	30
2.0	1.0-2.0	30
3.0	2.0-3.0	30
4.0	3.0-4.0	30
5.0	4.0-5.0	24
6.0	5.0-6.0	24
7.0	6.0-7.0	24
8.0	7.0-8.0	24
9.0	8.0-9.0	24
10.0	9.0-10.0	24

**ER20**

型号 Cat.No	夹持	单价 (元)
1.0	0.5-1.0	36
2.0	1.0-2.0	36
3.0	2.0-3.0	24
4.0	3.0-4.0	24
5.0	4.0-5.0	24
6.0	5.0-6.0	24
7.0	6.0-7.0	24
8.0	7.0-8.0	24
9.0	8.0-9.0	24
10.0	9.0-10.0	24
11.0	10.0-11.0	24
12.0	11.0-12.0	24
13.0	12.0-13.0	24

**ER25**

型号 Cat.No	夹持	单价 (元)
1	0.5-1	32
1.5	1-1.5	32
2	1.5-2	32
2.5	2-2.5	26
3	2.5-3	26
1/8--	3-3.175	26
4	3-4	26
5	4-5	26
6	5-6	26
7	6-7	26
8	7-8	26
9	8-9	26
10	9-10	26
11	10-11	26
12	11-12	26
13	12-13	26
14	13-14	26
15	14-15	26
16	15-16	26

**ER32**

型号 Cat.No	夹持	单价 (元)
2	1-2	36
3	2-3	30
1/8--	3-3.175	30
4	3-4	30
5	4-5	30
6	5-6	30
7	6-7	30
8	7-8	30
9	8-9	30
10	9-10	30
11	10-11	30
12	11-12	30
13	12-13	30
14	13-14	30
15	14-15	30
16	15-16	30
17	16-17	30
18	17-18	30
19	18-19	30
20	19-20	30

**ER40**

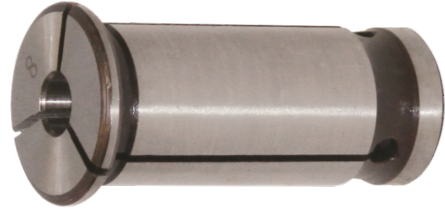
型号 Cat.No	夹持	单价 (元)
2	1-2	40
3	2-3	36
1/8--	3-3.175	36
4	3-4	36
5	4-5	36
6	5-6	36
7	6-7	36
8	7-8	36
9	8-9	36
10	9-10	36
11	10-11	36
12	11-12	36
13	12-13	36
14	13-14	36
15	14-15	36
16	15-16	36
17	16-17	36
18	17-18	36
19	18-19	36
20	19-20	36
21	20-21	36
22	21-22	36
23	22-23	36
24	23-24	36
25	24-25	36
26	25-26	36

**ER50**

型号 Cat.No	夹持	单价 (元)
6	5-6	100
7	6-7	100
8	7-8	100
9	8-9	100
10	9-10	100
11	10-11	100
12	11-12	100
13	12-13	100
14	13-14	100
15	14-15	100
16	15-16	100
17	16-17	100
18	17-18	100
19	18-19	100
20	19-20	100
21	20-21	100
22	21-22	100
23	22-23	100
24	23-24	100
25	24-25	100
26	25-26	100
27	26-27	100
28	27-28	100
29	28-29	100
30	29-30	100
32	31-32	100



### 直筒式弹性筒夹 Straight spring collet



型号 Cat.No	单价 (元)
C20	36
C22/C25	36
C32	36
C42	60

### QZ 弹性筒夹 QZ spring collet

型号 Cat.No	单价 (元)
C20	36
C22/C25	36
C32	36
C42	60



### ER 螺帽 ER Clamping nut



型号 Cat.No	单价 (元)
ER8	36
ER11	24
ER16	24
ER20	24
ER25	26
ER32	30
ER40	36
ER50	100

型号	单价 (元)	型号	单价 (元)	型号	单价 (元)	型号	单价 (元)
扳手A型		扳手M型		UM扳手			
ER11	20	ER11	24	ER25	26	C32扳手	36
ER16	20	ER16	24	ER32	30	APU扳手	20
ER20	20	ER20	24	ER40	36	SK10扳手	320
		ER25	26	ER50	100		

### BT 拉钉 BT Pull nail



型号 Cat.No	单价 (元)
BT30-45°	16
BT40-45°	16
BT50-45°	30
BT30-60°	20
BT40-60°	20
BT50-60°	30
BT30-90°	20
BT40-90°	20
BT50-90°	30

### BT 给水型拉钉 BT Pull stud(centre through coolant)



型号 Cat.No	单价 (元)
BT40-45° W	20
BT40-60° W	20
BT40-90° W	20
BT50-45° W	32
BT50-60° W	32
BT50-90° W	32

### DIN69872 拉钉 DIN 69872 Pull nail



型号 Cat.No	单价 (元)
DIN69872-30	20
DIN69872-40(A)	20
DIN69872-50(A)	32

### JIS 拉钉 JIS Pull nail



型号 Cat.No	单价 (元)
JIS B6339-40P	20
JIS B6339-50P	32

### MAZAK 拉钉 MAZAK Pull nail



型号 Cat.No	单价 (元)
MAZAK-BT40	20
MAZAK-BT50	30

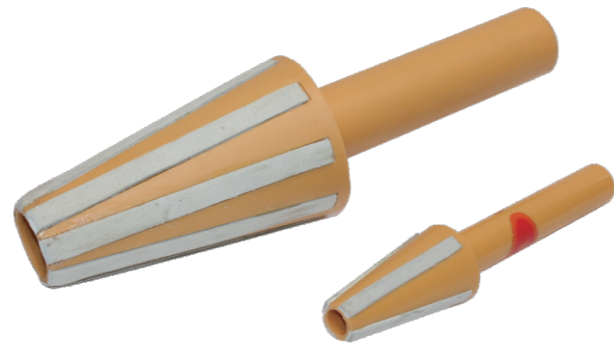


### CAT 拉钉 CAT Pull nail



型号 Cat.No	单价 (元)
BT30-45拉钉	16
BT40-45拉钉	16
BT50-45拉钉	30
BT30拉钉	20
BT40拉钉	20
BT50拉钉	32
BT40出水拉钉	20
BT50出水拉钉	32
MAZAK拉钉BT40	20
MAZAK拉钉BT50	32

### 主轴清洁棒 Spindle taper wiper



型号 Cat.No	单价 (元)
30清洁棒	30
40清洁棒	36
50清洁棒	50
30锁刀座	170
40锁刀座	170
50锁刀座	300

### 量表外置式Z轴设定器 Z-Axis zero presetter(Magnetic)



型号 Cat.No	形式	总高度
ZSI-50	量表式 大表面	50
ZSI-50S	量表式 小表面	50

### 寻边器 Edge finder



型号 Cat.No	单价 (元)
Z轴设定器	640
CE-420普通分钟棒	20
CE-430防磁分钟棒	70
光电分钟棒	120
电池	15

通用螺丝 General screw	
T形扳手 T-shaped wrench	
旗形扳手 Flag spanner	
直柄扳手 Straight shank wrench	
开口型扳手 Open wrench	
卡口型扳手 Bayonet wrench	

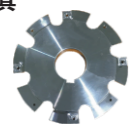
型号 Cat.No	单价 (元)
螺丝M2-5	1
螺丝M6	1.2
R4-R8点式压板	3
T6-T20红旗扳手(优质)	3
T6-T20红旗扳手(经济)	2
T型扳手 T8/10/15/20	7
直柄扳手 25/30	10
T型扳手 T8/10/15/20	7
直柄扳手 25/30	10

强力T型扳手 Strong T-type wrench	
菊花型扳手 Chrysanthemum wrench	

	型号	单价 (元)		型号	单价 (元)
R8ER刀柄	B R8-ER25	180	R8接杆	R8-JT6 M12	40
	A R8-ER32	170		R8-JT6 7/16-20	40
	B R8-ER32	170		R8-JT3 7/16-20	40
	A R8-ER40	180		R8-JT2 7/16-20	40
	B R8-ER40	180		R8-JT1 7/16-20	40
R8FMB刀柄	B R8-FMB16	170	R8-B22 M12	40	
	B R8-FMB22	150	R8-B18 M12	40	
	B R8-FMB27	160	R8-B16 M12	40	
	B R8-FMB32	160	R8-B12 M12	40	
	B R8-FMB40	170	R8-B10 M12	40	
	A R8-FMB22	160	R8-B22 7/16-20	40	
	A R8-FMB27	160	R8-B18 7/16-20	40	
	A R8-FMB32	160	R8-B16 7/16-20	40	
	变径套	A R8-MT2	52	R8-B12 7/16-20	40
		B R8-MT2	52	R8-B10 7/16-20	40
A R8-MT3		52	R8夹头	A 1/2 1/4 1/8 3/4 3/8 5/8 3/16 5/16	36
B R8-MT3		52		A 3 4 5 6 8 10 12 14 16 18 20	36
A R8-MT4	86	B 1/2 1/4 1/8 3/4 3/8 5/8 3/16 5/16		36	
B R8-MT4	86	B 3 4 5 6 8 10 12 14 16 18 20		36	
直柄接杆	C10-B12	40	B 25 25.4	60	
	C20-B18	40			
	C20-B16	40			
	C20-JT6	40			
	C20-JT3	40			



非标刀具



非标刀具



非标刀具



非标打孔微调精镗倒角一体刀具



螺旋木工刀



玉米粗铣刀



整体合金非标刀具



球头铣刀



焊接非标



非标刀具



轮毂刀



SDC舍弃式侧铣刀

600直接可订做



非标刀盘



非标合金成型刀



非标刀



玉米倒角刀



双面倒角刀



镗刀体Ø19-Ø1300有现货



莫氏面铣刀



莫氏4号面铣刀



刀具车



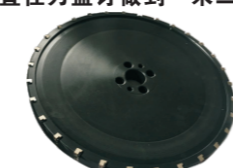
非标成型刀



非标刀具



直径刀盘订做到一米二



GSKM高速八角面铣刀



超长玉米铣刀/强力刀柄



FMB刀柄做到1米2长



强力刀柄做到650长



合金锯片铣刀

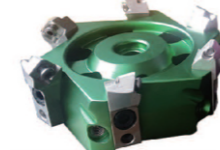


微调铝合金刀盘

直径订做到一米二微调铝合金刀盘



45° 微调铝合金刀盘



反转刀盘

